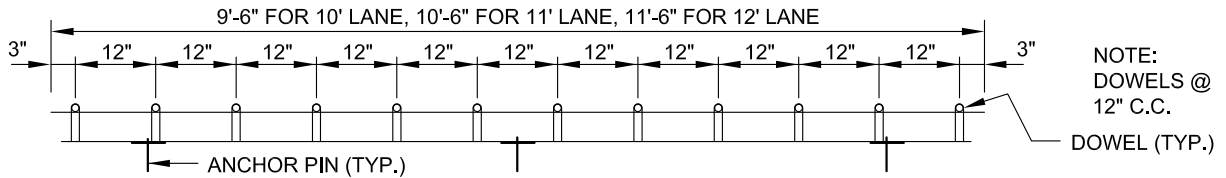
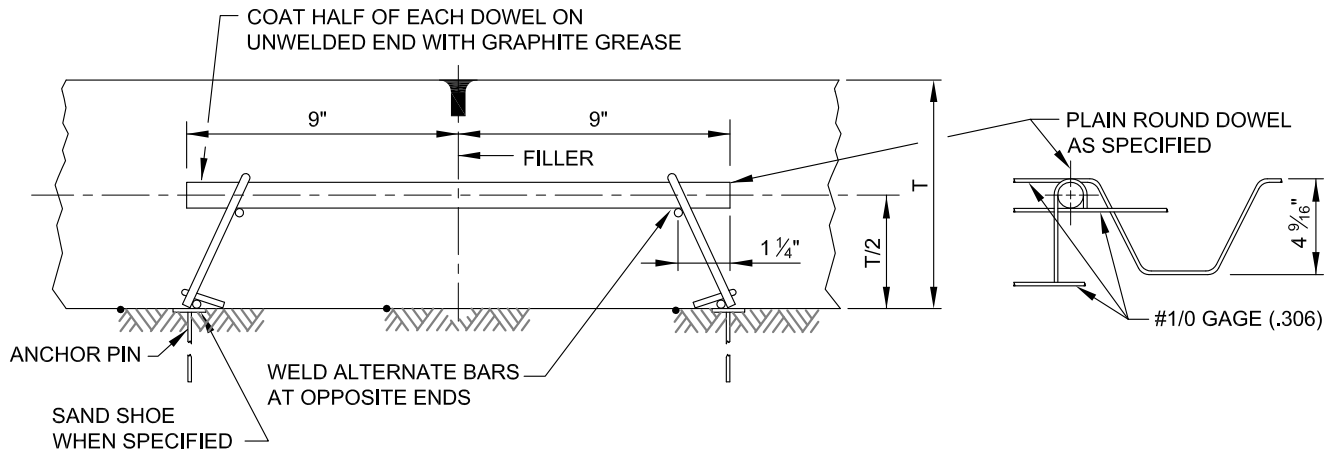


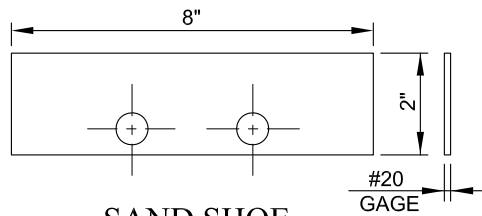
PLAN



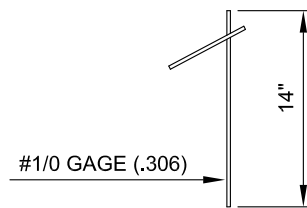
ELEVATION



SECTION A-A



SAND SHOE



ANCHOR PIN

GENERAL NOTE

THE DIAMETER OF ALL DOWELS SHALL BE AS SHOWN ON STD. BC 572.21. SAND SHOES, ADDED WHEN SPECIFIED, ARE TO BE USED UNDER THE FRAME TO HOLD DOWEL UNIT IN TRUE ALIGNMENT. SAND SHOES ADDED IN FIELD. THE UNITS ARE TO BE STAKED IN PLACE BY DRIVING #1/0 GAGE PINS IN NUMBERS AND TO A DEPTH AS SUBGRADE CONDITIONS MAKE NECESSARY ALONG BOTH SIDES OF FRAME. A MINIMUM OF SIX (6) STAKES SHALL BE USED FOR EACH ASSEMBLY. THE UNITS ARE TO BE SHOP FABRICATED.



APPROVED:
Primal Devita
 DIVISION CHIEF, TRANSPORTATION ENGINEERING AND CONSTRUCTION
Khalil Zare
 DIRECTOR, DEPARTMENT OF TRANSPORTATION

**CITY OF BALTIMORE
 DEPARTMENT OF TRANSPORTATION
 TRANSPORTATION ENGINEERING AND
 CONSTRUCTION**

**LOAD TRANSFER ASSEMBLY
 CONTRACTION JOINTS**

ISSUED	REVISED	REVISED
8 / 2010		
STANDARD NO. BC 572.23		
SCALE: NONE	SHEET 1 OF 1	