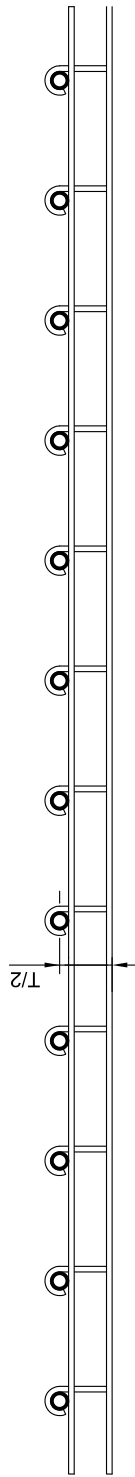
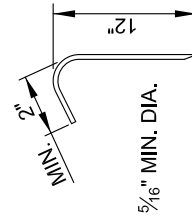


PLAN OF DOWEL UNIT FOR CONTRACTION JOINT

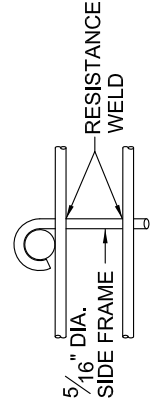
NOTES:
 STAKING PINS TO BE A MIN. OF 5/16" DIA. BARS, THE LONG END BEING 12" IN LENGTH AND POINTED, THE SHORT END WILL BE A MIN. OF 2" IN LENGTH.
 T=PAVEMENT THICKNESS
 THE DIAMETER OF ALL DOWELS SHALL BE AS SHOWN ON BC 572.21.



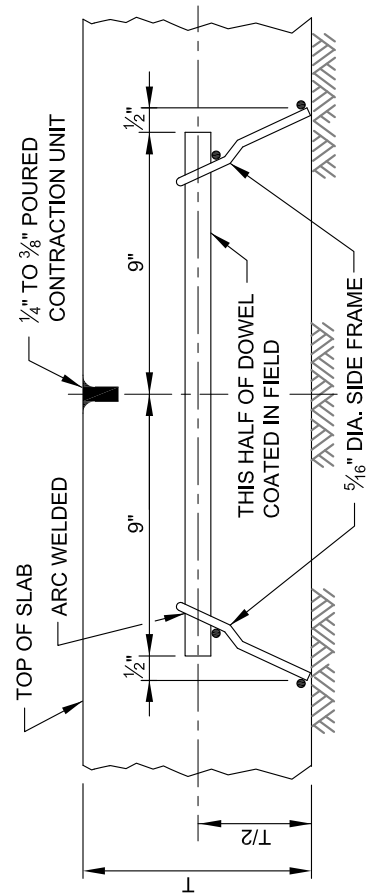
SECTION B-B




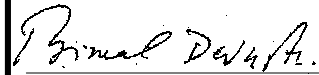
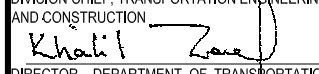
STAKING PIN DETAIL



SIDE FRAME DETAIL



SECTION THRU CONTRACTION JOINT

	APPROVED:  DIVISION CHIEF, TRANSPORTATION ENGINEERING AND CONSTRUCTION  DIRECTOR, DEPARTMENT OF TRANSPORTATION	CITY OF BALTIMORE DEPARTMENT OF TRANSPORTATION TRANSPORTATION ENGINEERING AND CONSTRUCTION	ISSUED 8 / 2010	REVISED	REVISED
	DOWEL ASSEMBLY CONTRACTION JOINTS		STANDARD NO. BC 572.42		
	SCALE : NONE		SHEET 1 OF 1		