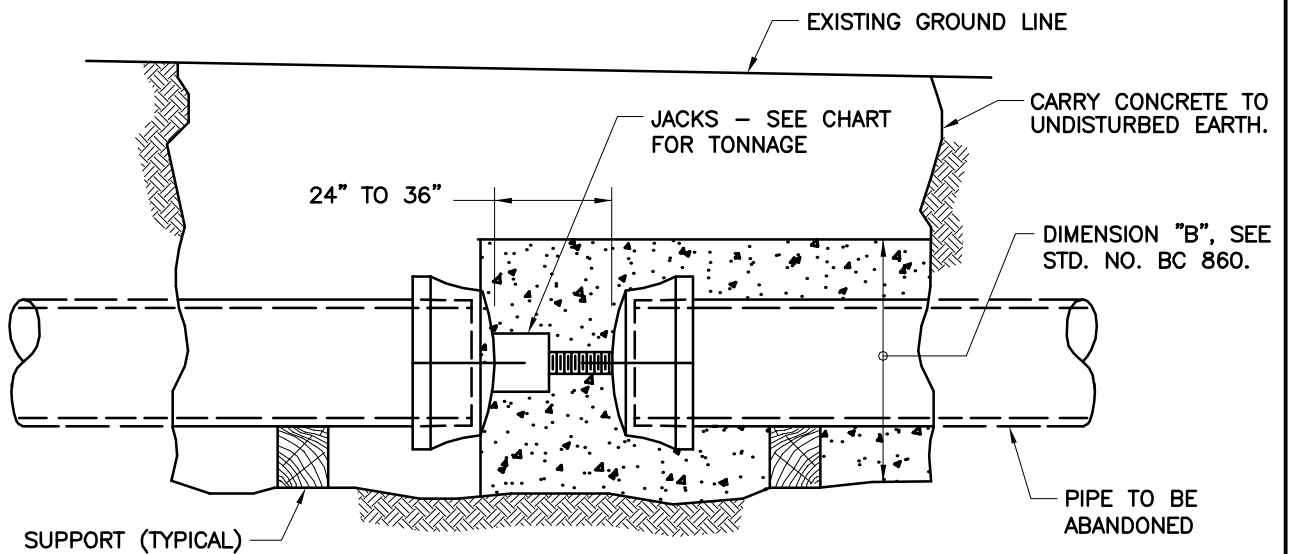


PLAN VIEW



SECTION A-A

**NOTES:**

1. GLANDS, BOLTS AND GASKETS NOT REQUIRED ON THIS CAP UNLESS LEAKAGE IS PRESENT IN ABANDONED PIPE. FOR CAP DIAMETER >12", JACK LOAD WITH BLOCKING ON CAPS.
2. O.D. MEASURED IN INCHES.
3. IN LIEU OF JACK, STEEL BLOCKING OF SAME CAPACITY MAY BE USED.

**JACK TONNAGE CHART**

JACK TONNAGE AT 100 PSI	$\frac{O.D.^2}{25}$ TONS
JACK TONNAGE AT 150 PSI	$\frac{O.D.^2}{16}$ TONS
JACK TONNAGE AT 200 PSI	$\frac{O.D.^2}{12}$ TONS



APPROVED:  
  
 HEAD, BUREAU OF WATER AND WASTEWATER  
  
 DIRECTOR, DEPARTMENT OF PUBLIC WORKS

CITY OF BALTIMORE  
 DEPARTMENT OF PUBLIC WORKS  
 BUREAU OF WATER AND WASTEWATER  
 DOUBLE CAPS, JACK, AND BUTTRESS  
 (FOR D.I. AND C.I. PIPE ONLY)

ISSUED	REVISED	REVISED
3 / 2008		
<b>STANDARD NO. BC 865.01</b>		
SCALE: NONE	SHEET 1 OF 1	