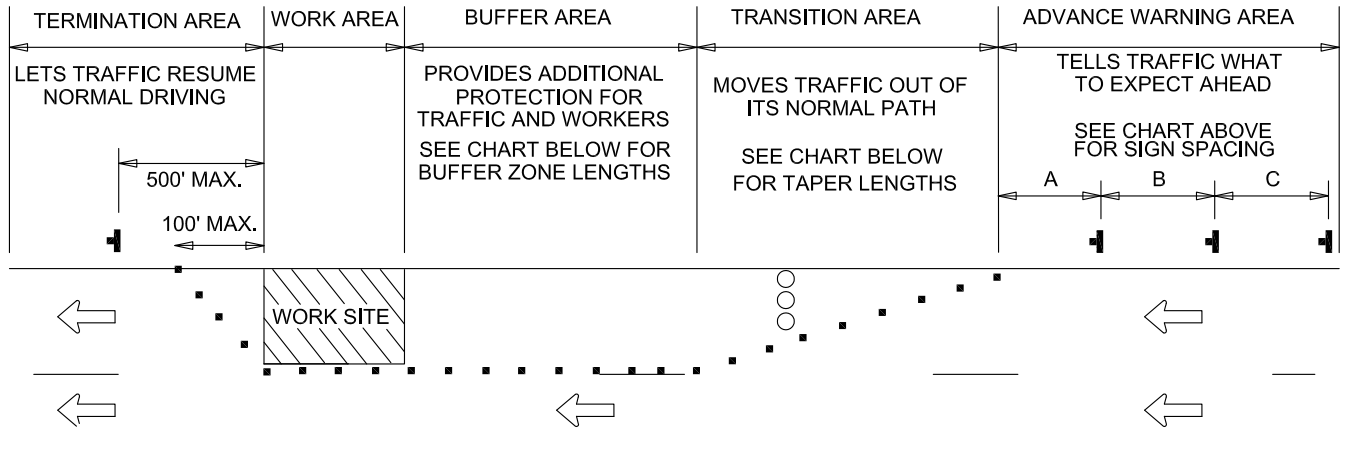


TABLE 1

GUIDELINES FOR SIGN SPACING					
SPEED M.P.H.	MINIMUM DISTANCE FROM TAPER TO FIRST SIGN	ADDITIONAL SIGNS IN SERIES TO BE SPACED AT A MINIMUM			MINIMUM COMBINED ADVANCED WARNING
		A	B	C	
25-30	200'	200'	200'		600'
30-35	300'	300'	300'		900'
40-45	500'	500'	500'		1500'
45-65	800'	700'	1100'	2600' (OPTIONAL)	2600'

EXAMPLE: TWO LANES, ONE-WAY ROADWAY



NOTE: THE POSTED SPEED PLUS 10 MPH SHOULD BE USED FOR THE DESIGN OF SIGN SPACING, TAPER AND BUFFER LENGTHS

TABLE 2

GUIDELINES FOR TAPER LENGTHS					
SPEED M.P.H.	TAPER LENGTH LANE WIDTH IN FT.			NUMBER OF DEVICES FOR TAPER	SPACING OF DEVICES ALONG TAPER IN FEET
	10	11	12		
20	70	75	80	5	20
25	105	115	125	6	25
30	150	165	180	7	30
35	205	225	245	8	35
40	270	295	320	9	40
45	450	495	540	13	45
50	500	550	600	13	50
55	550	605	660	13	55
60	600	660	720	13	60
65	650	715	780	13	65

$L = WS^2 / 60$ FOR SPEEDS EQUAL TO OR LESS THAN (<) 40 MPH
 WHERE: L = MINIMUM LENGTH OF TAPER (FT.)
 S = NUMERICAL VALUE OF PREVAILING TRAVEL SPEED OR SPEED LIMIT (MPH), WHICHEVER IS HIGHER, PRIOR TO WORK STARTING.
 W = WIDTH OF OFFSET (FT.)

TABLE 3

GUIDELINES FOR BUFFER ZONE LENGTHS	
SPEED (MPH)	LENGTH (FEET)
20	35
25	55
30	85
35	120
40	170
45	220
50	280
55	335
60	415
65	485

NOTES:

LENGTHS IN TABLE 2 ARE MINIMUM TAPER LENGTHS REQUIRED FOR MERGING TRAVEL LANES (MERGING TAPERS). WHEN SHIFTING TRAVEL LANES (SHIFTING TAPER) AND CONDITIONS DO NOT PERMIT USE OF THE LENGTHS IN TABLE 2, LENGTHS EQUAL TO ONE-HALF THOSE IN TABLE 2 MAY BE USED.

MERGING TAPERS SHALL BE A MINIMUM 1,000 FEET ON EXPRESSWAYS AND FREEWAYS UNLESS OTHERWISE DIRECTED BY THE ENGINEER.

WHEN USED, ARROW PANELS SHOULD BE PLACED ON THE SHOULDER AT THE BEGINNING OF THE TAPER. WHERE NO SHOULDER EXISTS, ARROW PANELS SHOULD BE PLACED WITHIN THE TAPER AS CLOSE TO THE BEGINNING OF THE TAPER AS POSSIBLE.



APPROVED: *Frank Murphy*
 DEPUTY DIRECTOR - OPERATIONS
Khalil Zane
 DIRECTOR, DEPARTMENT OF TRANSPORTATION

CITY OF BALTIMORE
 DEPARTMENT OF TRANSPORTATION
 TRAFFIC DIVISION

**SIGN SPACING, TAPER AND
 BUFFER LENGTHS CRITERIA**

ISSUED	REVISED	REVISED
8 / 2010		

STANDARD NO.
 BC 104.01-4
 SCALE : NONE SHEET 4 OF 7