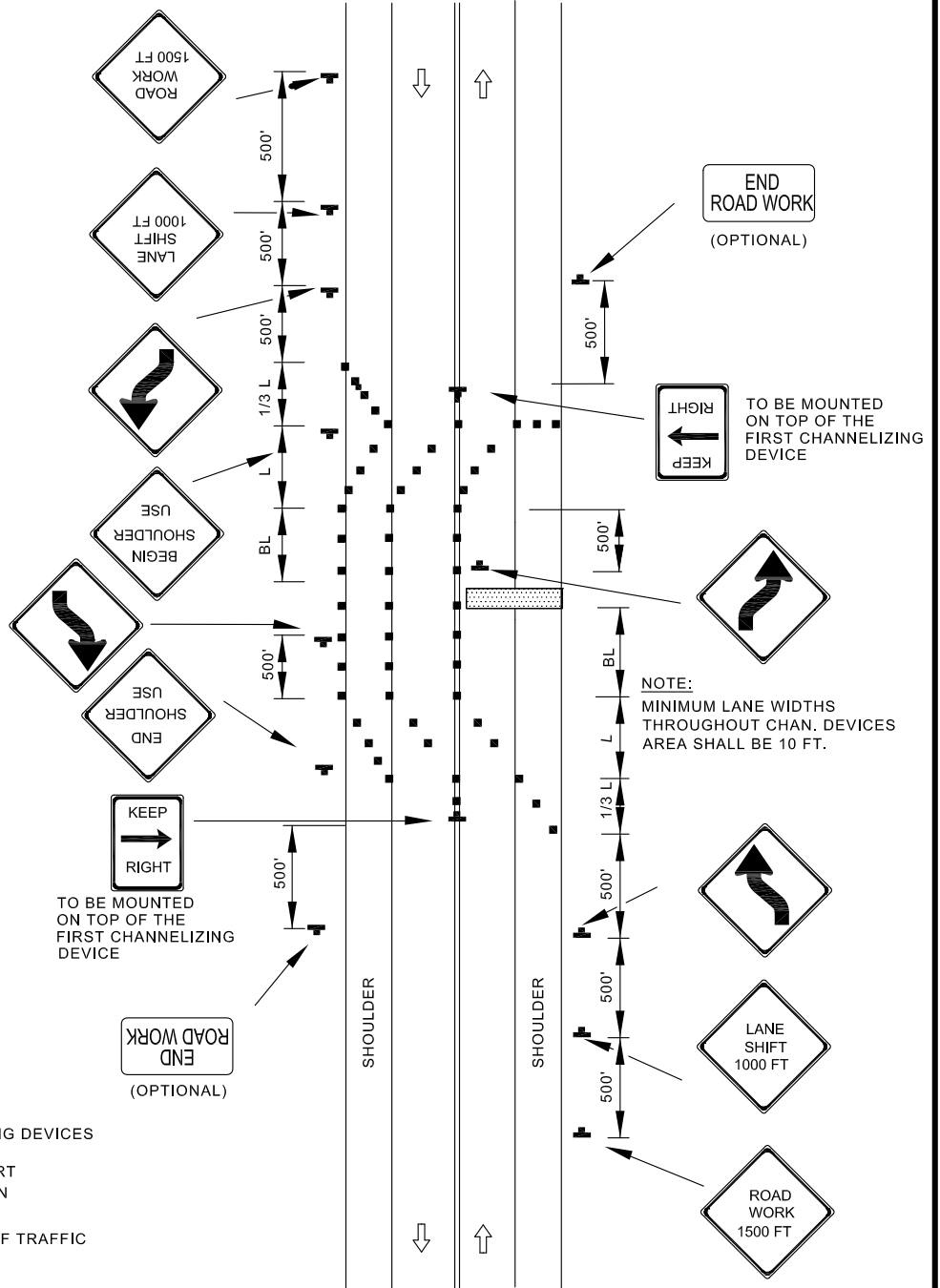


TEMPORARY TRAFFIC CONTROL TYPICAL APPLICATION

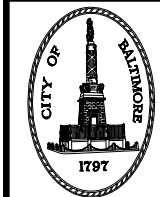
NOTES:

- THIS TYPICAL SHALL BE USED FOR ANY LANE SHIFT WHERE PREVAILING SPEEDS CANNOT BE MAINTAINED THROUGH THE SHIFT.
- FOR LANE SHIFTS WHICH DO NOT SATISFY ABOVE CONDITIONS:
 - ▶ DELETE "REVERSE CURVE" WARNING SIGNS, AND
 - ▶ REPLACE "LANE SHIFT" SIGNS WITH "ROAD WORK XXX" SIGNS OR OTHER APPROPRIATE SIGNS AS SHOWN IN TEMPORARY TRAFFIC CONTROL TYPICAL APPLICATIONS.



KEY:

- CHANNELIZING DEVICES
- SIGN SUPPORT
- FACE OF SIGN
- DIRECTION OF TRAFFIC
- WORK SITE



APPROVED: *Frank Murphy*
 DEPUTY DIRECTOR - OPERATIONS
Khalil Zane
 DIRECTOR, DEPARTMENT OF TRANSPORTATION

CITY OF BALTIMORE
 DEPARTMENT OF TRANSPORTATION
 TRAFFIC DIVISION

**LANE SHIFT RIGHT OR LEFT SIDE /
 2 LANE, 2-WAY EQUAL OR LESS
 THAN 40 MPH / 15 MIN.- 12 HRS. OR
 DAYTIME ONLY**

ISSUED	REVISED	REVISED
8 / 2010		
STANDARD NO. BC 104.02-4		
SCALE : NONE	SHEET 1 OF 1	