

# TEMPORARY TRAFFIC CONTROL TYPICAL APPLICATION

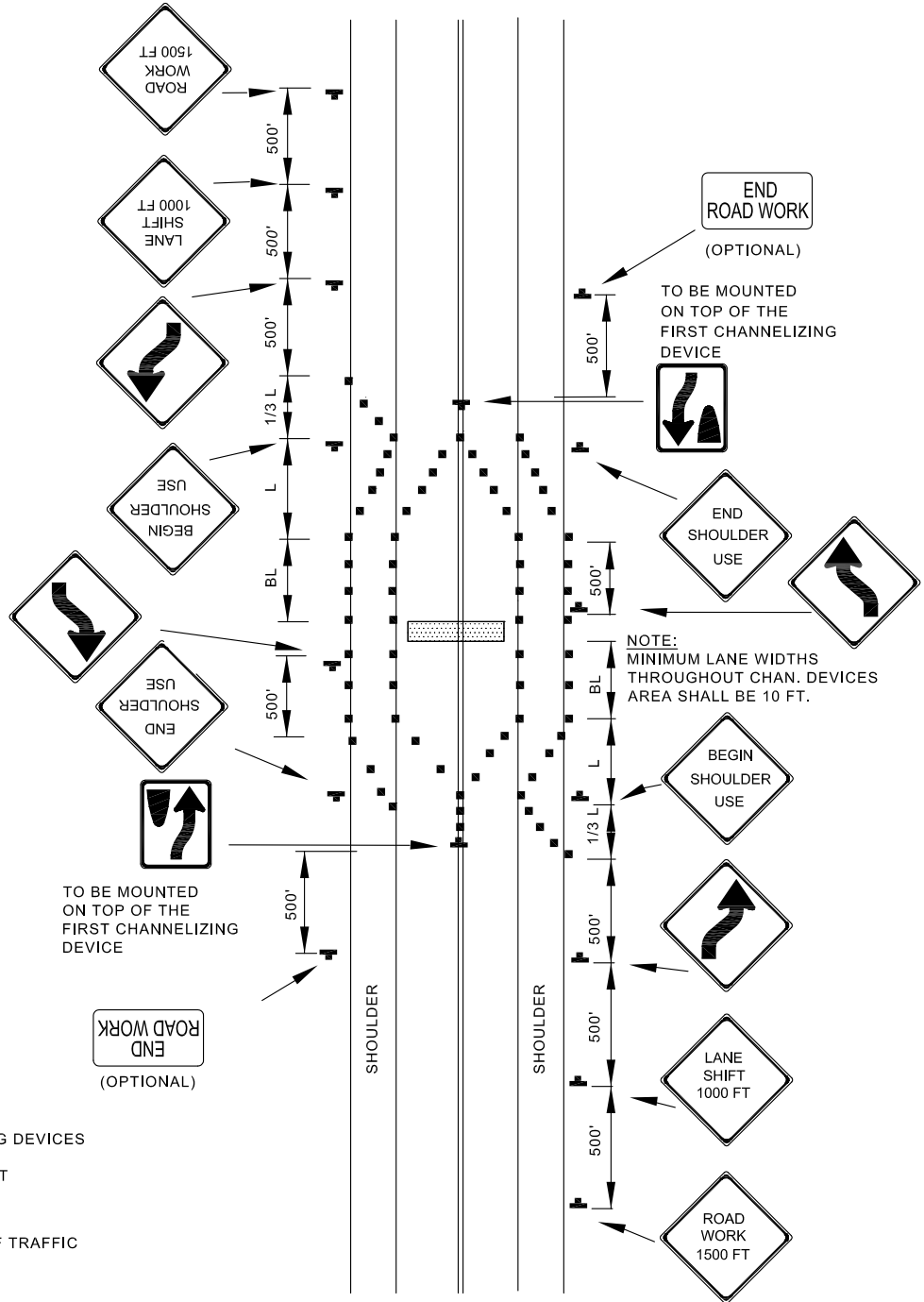
**NOTES:**

THE "BEGIN AND END SHOULDER USE" SIGNS SHOULD BE OMITTED WHEN THE SHOULDER CANNOT BE DIFFERENTIATED FROM THE NORMAL TRAVEL PATH.

- THIS TYPICAL SHALL BE USED FOR ANY LANE SHIFT WHERE PREVAILING SPEEDS CANNOT BE MAINTAINED THROUGH THE SHIFT.
- FOR LANE SHIFTS WHICH DO NOT SATISFY ABOVE CONDITIONS:

▶ DELETE "REVERSE CURVE" WARNING SIGNS, AND

▶ REPLACE "LANE SHIFT" SIGNS WITH "ROAD WORK XXX" SIGNS OR OTHER APPROPRIATE SIGNS AS SHOWN IN TEMPORARY TRAFFIC CONTROL TYPICAL APPLICATIONS.



**KEY:**

- CHANNELIZING DEVICES
- SIGN SUPPORT  
FACE OF SIGN
- DIRECTION OF TRAFFIC
- WORK SITE



APPROVED:  
*Frank Murphy*  
 DEPUTY DIRECTOR - OPERATIONS  
*Khali Zane*  
 DIRECTOR, DEPARTMENT OF TRANSPORTATION

**CITY OF BALTIMORE**  
**DEPARTMENT OF TRANSPORTATION**  
**TRAFFIC DIVISION**

**LANE SHIFT FOR COMPLETE TRAVEL WAY BLOCKAGE / 2 LANE 2-WAY EQL / LESS THAN 40 MPH / 15 MIN. - 12 HRS. OR DAYTIME ONLY**

ISSUED	REVISED	REVISED	
8 / 2010			
<b>STANDARD NO.</b> BC 104.02-8			
SCALE : NONE		SHEET 1 OF 1	