





TEMPORARY TRAFFIC CONTROL TYPICAL APPLICATION

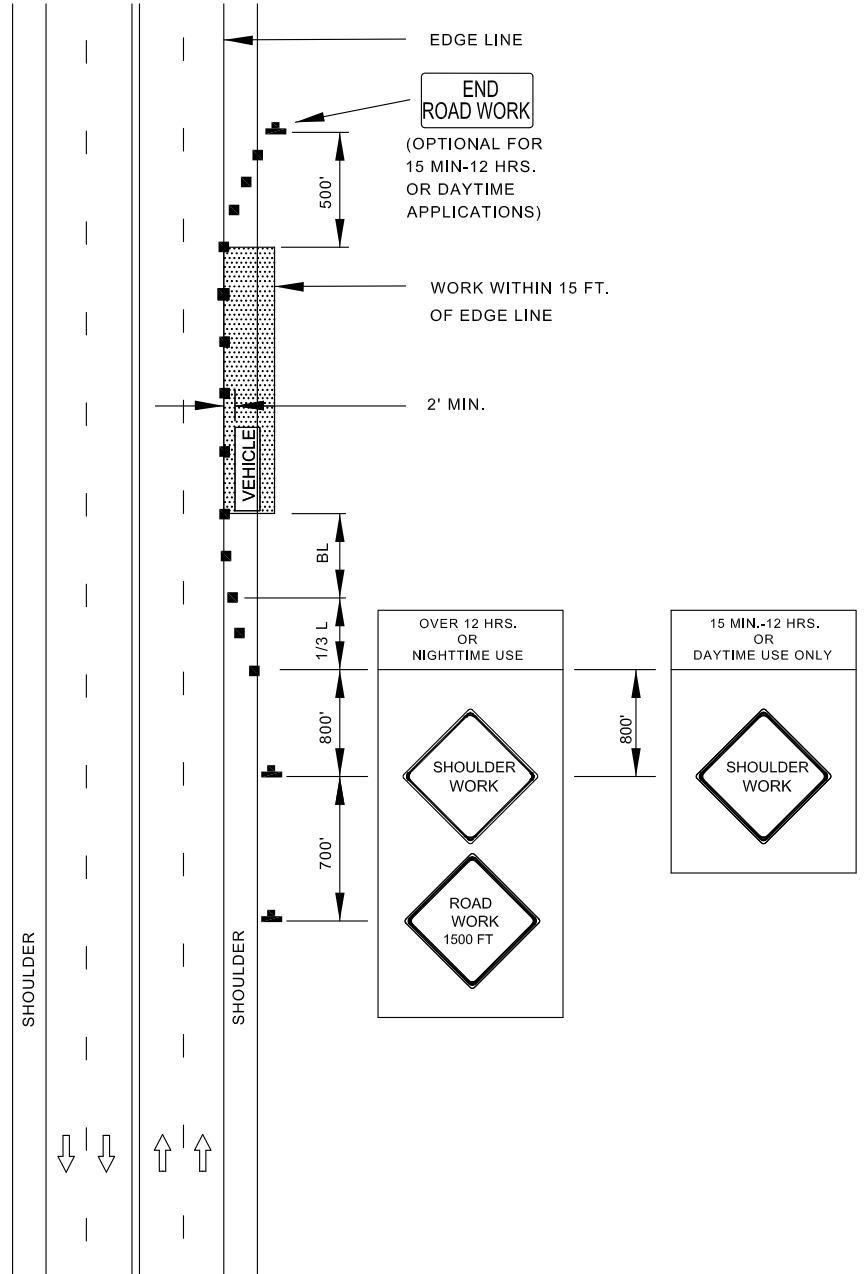
NOTES:

SHOULDER CLOSED SIGNS ARE REQUIRED IN PLACE OF SHOULDER WORK SIGNS WHEN THE SHOULDER IS CLOSED BY A PHYSICAL BARRIER.

WHEN WORK INVOLVES A PAVEMENT EDGE DROP-OFF, REFER TO STANDARD NO. BC 104.06-12.

KEY:

-  CHANNELIZING DEVICES
-  SIGN SUPPORT
FACE OF SIGN
-  DIRECTION OF TRAFFIC
-  WORK SITE



APPROVED:
Frank Murphy
 DEPUTY DIRECTOR - OPERATIONS
Khali Zane
 DIRECTOR, DEPARTMENT OF TRANSPORTATION

**CITY OF BALTIMORE
 DEPARTMENT OF TRANSPORTATION
 TRAFFIC DIVISION**

**SHOULDER WORK / MULTILANE
 UNDIVIDED
 EQUAL / LESS THAN 40 MPH**

ISSUED	REVISED	REVISED
8 / 2010		
STANDARD NO. BC 104.03-2		
SCALE : NONE	SHEET 1 OF 1	