

TEMPORARY TRAFFIC CONTROL TYPICAL APPLICATION


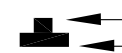


NOTES:

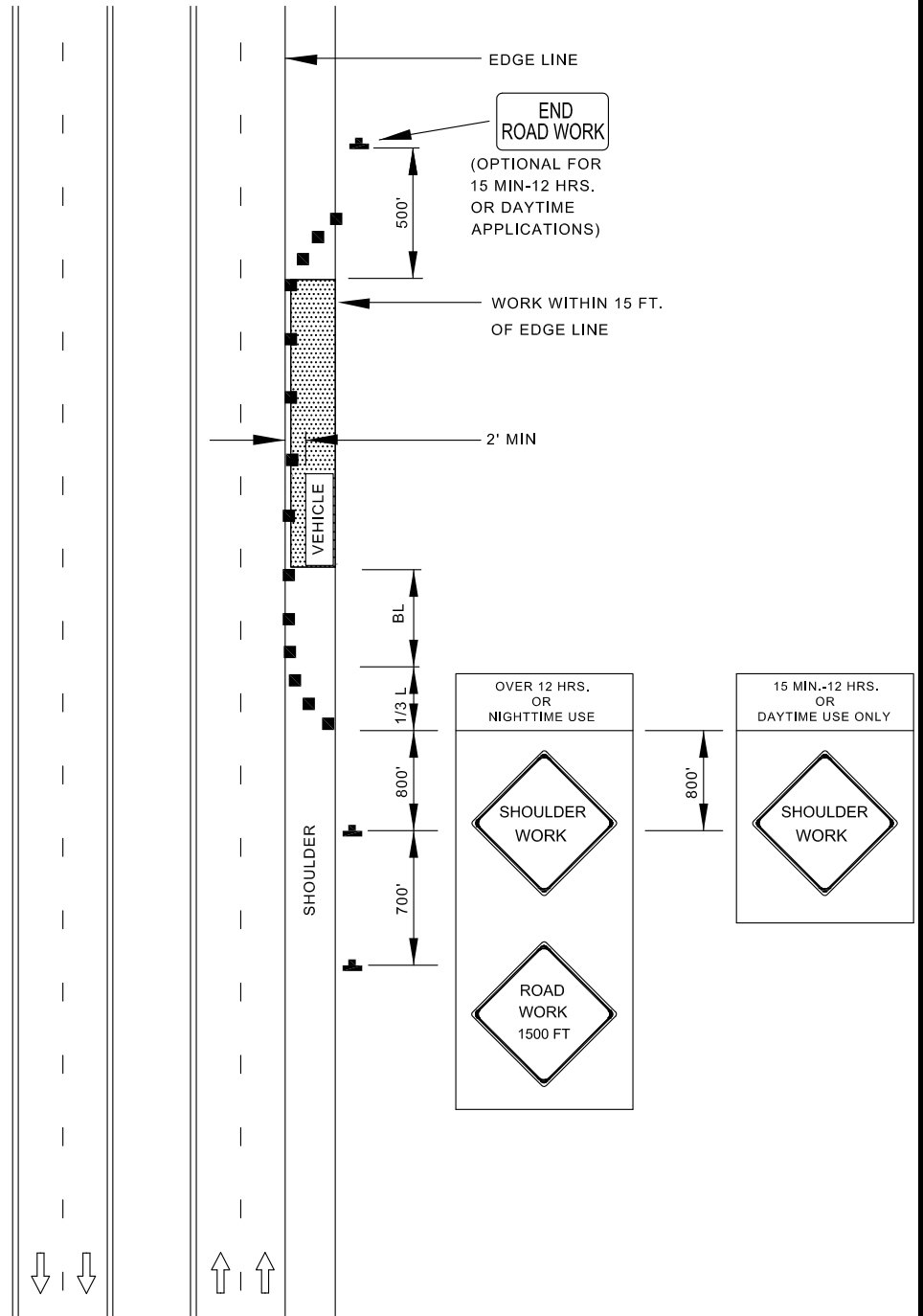
SHOULDER WORK SIGNS SHALL BE MOUNTED ON THE SIDE OF THE ROADWAY WHERE THE SHOULDER IS AFFECTED. USAGE OF SHOULDER WORK SIGNS ON THE OPPOSITE SIDE OF DIVIDED HIGHWAYS IS OPTIONAL.

SHOULDER CLOSED SIGNS ARE REQUIRED IN PLACE OF SHOULDER WORK SIGNS WHEN THE SHOULDER IS CLOSED BY A PHYSICAL BARRIER.

WHEN WORK INVOLVES A PAVEMENT EDGE DROP-OFF, REFER TO STANDARD NO. BC-104.06-12

KEY:

-  CHANNELIZING DEVICES
-  SIGN SUPPORT
FACE OF SIGN
-  DIRECTION OF TRAFFIC
-  WORK SITE



APPROVED:
Frank Murphy
 DEPUTY DIRECTOR - OPERATIONS
Khali Zane
 DIRECTOR, DEPARTMENT OF TRANSPORTATION

CITY OF BALTIMORE
DEPARTMENT OF TRANSPORTATION
TRAFFIC DIVISION

SHOULDER WORK / DIVIDED UNCONNECTED
EQUAL / LESS THAN 40 MPH

ISSUED	REVISED	REVISED	
8 / 2010			
STANDARD NO. BC 104.04-2			
SCALE : NONE		SHEET 1 OF 1	