



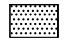



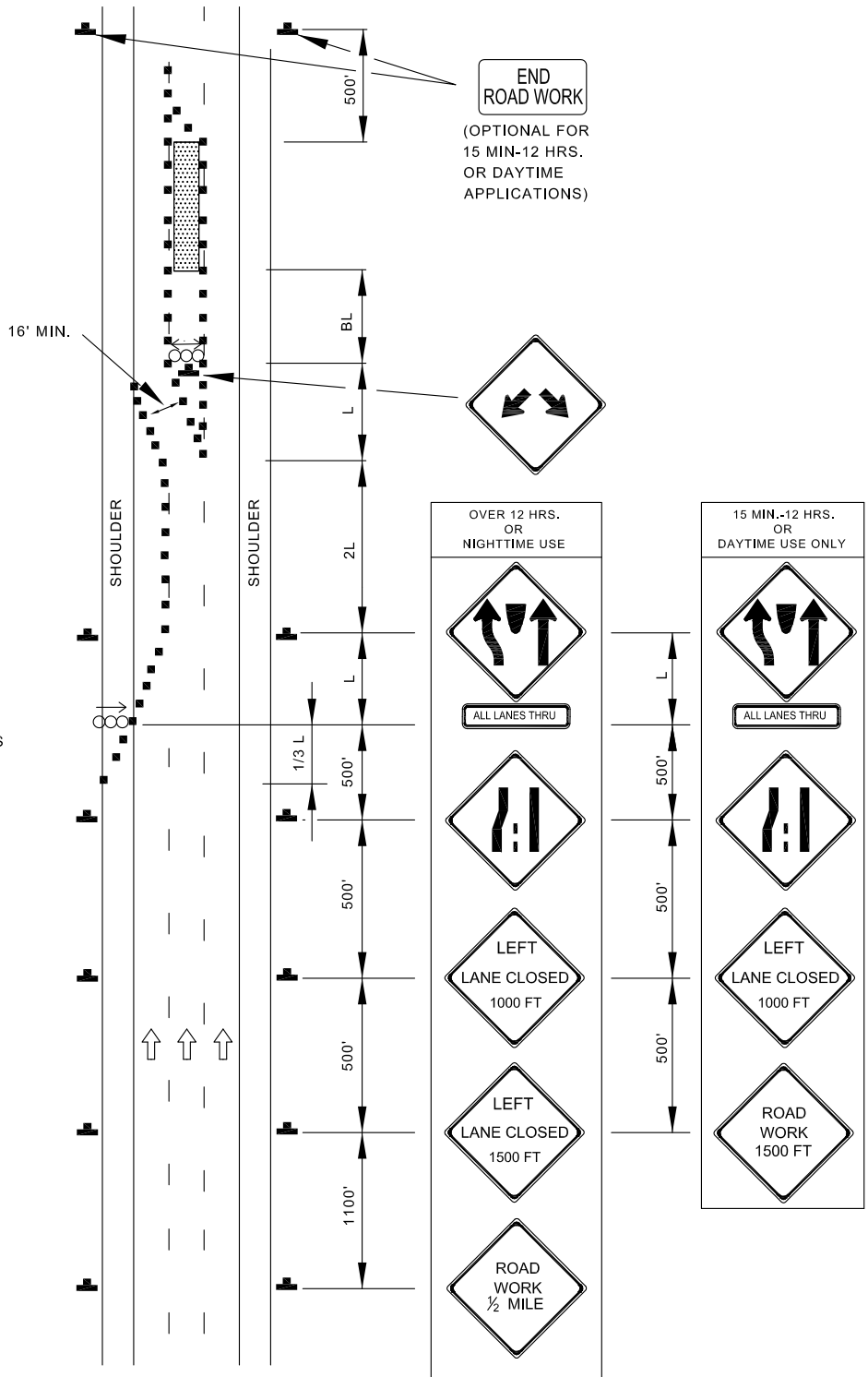
TEMPORARY TRAFFIC CONTROL TYPICAL APPLICATION


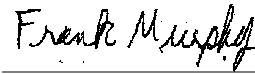
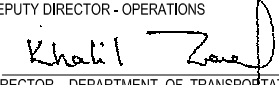
NOTE:

THIS TYPICAL APPLICATION SHOULD GENERALLY BE USED ONLY WHEN WORKERS ARE NOT PRESENT IN THE CENTER LANE. WHEN WORKERS ARE PRESENT IN THE CENTER LANE, EITHER TEMPORARY TRAFFIC BARRIER SHOULD BE USED TO CLOSE THE CENTER LANE OR A TWO LANE CLOSURE SHOULD BE USED.

KEY:

-  CHANNELIZING DEVICES
-  SIGN SUPPORT
-  FACE OF SIGN
-  DIRECTION OF TRAFFIC
-  WORK SITE
-  ARROW PANEL (WITH DIRECTIONAL ARROW)



	APPROVED:  DEPUTY DIRECTOR - OPERATIONS	CITY OF BALTIMORE DEPARTMENT OF TRANSPORTATION TRAFFIC DIVISION	ISSUED 8 / 2010	REVISED	REVISED
	 DIRECTOR, DEPARTMENT OF TRANSPORTATION	CENTER LANE CLOSURE / DIVIDED UNCONNECTED EQUAL / LESS THAN 40 MPH	STANDARD NO. BC 104.04-8		
				SHEET 1 OF 1	