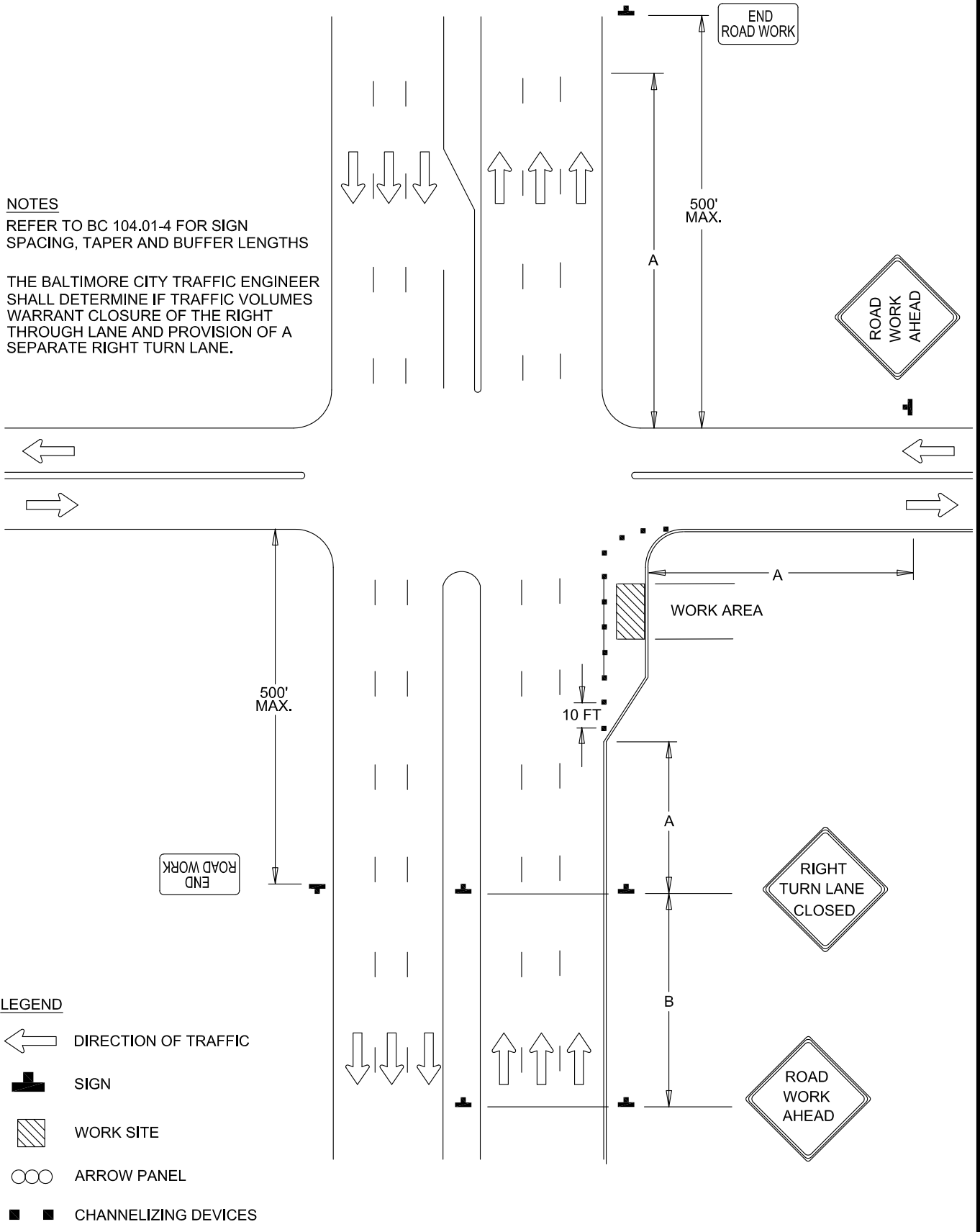


**NOTES**

REFER TO BC 104.01-4 FOR SIGN SPACING, TAPER AND BUFFER LENGTHS

THE BALTIMORE CITY TRAFFIC ENGINEER SHALL DETERMINE IF TRAFFIC VOLUMES WARRANT CLOSURE OF THE RIGHT THROUGH LANE AND PROVISION OF A SEPARATE RIGHT TURN LANE.



**LEGEND**

DIRECTION OF TRAFFIC

SIGN

WORK SITE

ARROW PANEL

CHANNELIZING DEVICES



APPROVED:  
*Frank Murphy*  
 DEPUTY DIRECTOR - OPERATIONS  
*Khalil Zane*  
 DIRECTOR, DEPARTMENT OF TRANSPORTATION

**CITY OF BALTIMORE**  
**DEPARTMENT OF TRANSPORTATION**  
**TRAFFIC DIVISION**

**TRAFFIC CONTROL FOR RIGHT**  
**TURN LANE CLOSURE**

ISSUED	REVISED	REVISED
8 / 2010		
STANDARD NO. BC 116.01		
SCALE : NONE	SHEET 1 OF 1	