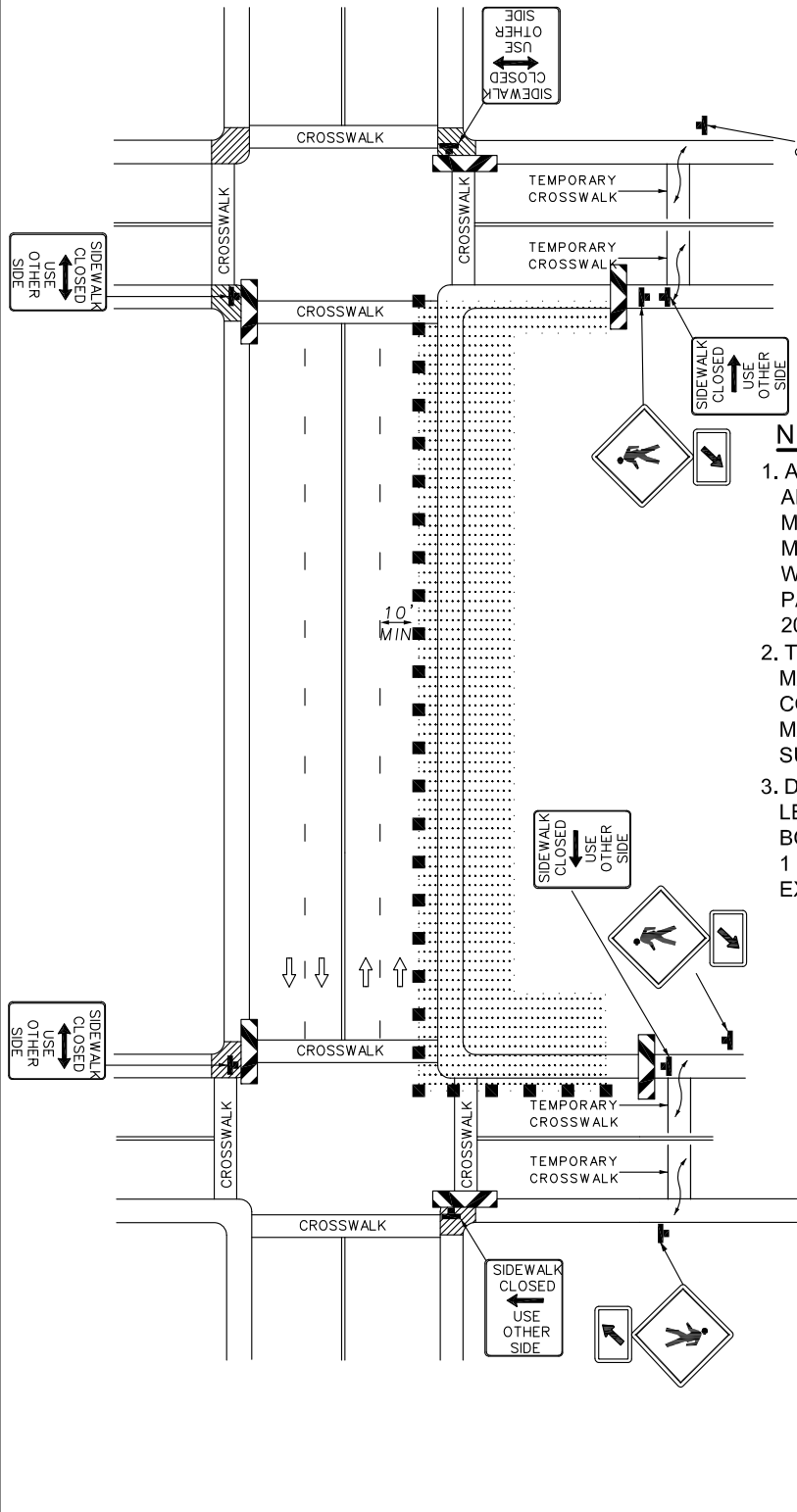


TEMPORARY TRAFFIC CONTROL TYPICAL APPLICATION FOR SIDEWALK CLOSURE
ALTERNATE PEDESTRIAN DETOUR ROUTE FOR FULL BLOCK CLOSURE



IMPORTANT:
THIS DRAWING SHALL BE USED IN
COMBINATION WITH THE GENERAL
NOTES BC 104.01-1 THRU 104.01-7

NOTES

1. A 5 FOOT MINIMUM WIDTH PEDESTRIAN PATH / ALTERNATE PEDESTRIAN PATH SHALL BE MAINTAINED WHERE POSSIBLE. WHERE A 5 FOOT MINIMUM WIDTH CANNOT BE ACHIEVED, A MINIMUM WIDTH OF 36 INCHES SHALL BE PROVIDED WITH PASSING ZONES (60 IN X 60IN) AT LEAST EVERY 200FT.
2. TEMPORARY RAMPS SHALL HAVE A SLOPE OF 12:1 MAX. PEDESTRIAN PATH AND RAMP SHALL BE CONSTRUCTED OF HOT MIX ASPHALT OR OTHER MATERIAL THAT CAN PROVIDE A SMOOTH, HARD SURFACE & WILL MAINTAIN 12:1 SLOPE.
3. DETECTABLE BARRICADES SHALL EXTEND AT LEAST 36" ABOVE THE PATHWAY WITH THE BOTTOM OF THE BARRICADE NO MORE THAN 1 1/2 INCHES ABOVE THE PATHWAY, AND SHALL EXTEND THE FULL WIDTH OF THE CLOSURE.

- KEY:**
- BARRICADE
 - DIRECTION OF TRAFFIC
 - WORK SITE
 - TEMPORARY RAMP (WITH DETECTABLE SURFACE WARNING)
 - DETECTABLE BARRICADE
 - EXISTING CURB RAMPS
 - CHANNELIZING DEVICES



APPROVED:
Frank Murphy
DEPUTY DIRECTOR - OPERATIONS
Khalil Zarek
DIRECTOR, DEPARTMENT OF TRANSPORTATION

CITY OF BALTIMORE
DEPARTMENT OF TRANSPORTATION
TRAFFIC DIVISION
**PED AND CURB-LANE CONTROL /
MULTILANE UNDIVIDED SPEEDS
LESS THAN OR EQUAL TO 40 MPH /
OVER 12 HRS. OR NIGHTTIME USE**

ISSUED	REVISED	REVISED
8 / 2010		
STANDARD NO. BC-117.01-3		
SCALE: NONE	SHEET 3 OF 4	