

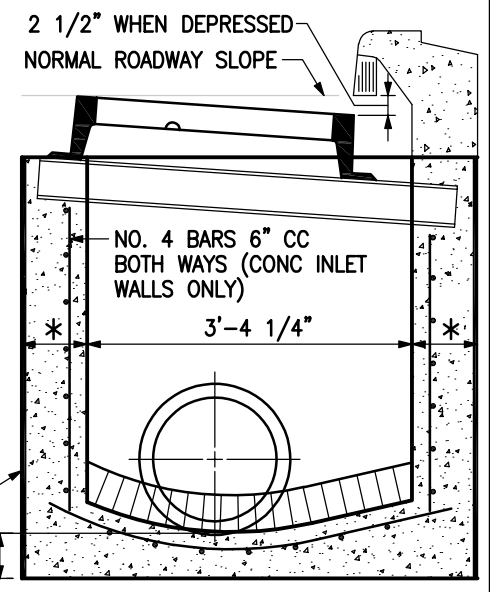
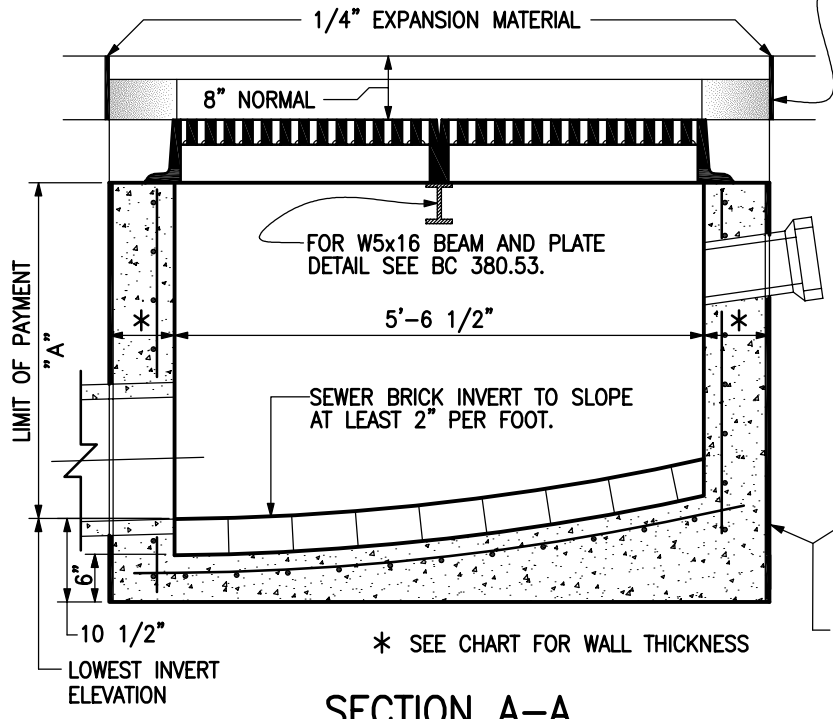
WALL THICKNESS	PRECAST	CAST-IN-PLACE
	6" MIN	8 1/2"
REINF	2 LAYERS- 4x4 W4.0 x W4.0- WWF	NO. 4 BARS @ 6" CC EW 2" COVER
CONCRETE	MIX 6	MIX 3
ALLOWABLE DEPTH	DPW APPROVAL REQUIRED OVER 15'	

NOTE: FOR METHOD OF DEPRESSING PAVEMENT AT INLETS SEE BC 380.99

6" V.P. STUB LOCATION AND DEPTH AS DIRECTED BY THE ENGINEER

TYPE 'S' FRAME AND GRATES, OR CURVED VANE (S-CV) AND CL 35 FRAME SEE BC 380.02 THROUGH BC 380.06

PRECAST SPECIAL CURB SEE BC 380.52






SECTION A-A

SECTION B-B

NOTES:

1. INLET MAY BE CONSTRUCTED OF BRICK, CAST IN PLACE OR PRECAST CONCRETE. SEE TABLE FOR CONCRETE AND STEEL REQUIREMENTS. SEE LATEST DPW SPEC FOR INLETS.
2. TOP 4" OF CONCRETE WALLS MAY BE BRICK MASONRY TO BRING GRATE TO REQUIRED GRADE.
3. PLACE 1/4" EXPANSION MATERIAL BETWEEN FRAME AND ABUTTING RIGID PAVEMENT, AND BETWEEN ENDS OF INLET CURB AND NORMAL CURB.
4. IF 6" MIX 1 CONCRETE IS USED AS FOUNDATION FOR BRICK INLET, PLACE NO. 4 DEFORMED BARS AT 12" CC BOTH WAYS, 2" CLEAR FROM TOP.
5. REINFORCEMENT REQUIRED ON OUTSIDE, AS WELL AS ON INSIDE OF WALLS, WHEN "A" IS GREATER THAN 8'-0". BAR SPACING SAME AS FOR INSIDE WALL.
6. DEPTH OF INLET CONNECTION IN STREETS AT CURB LINE TO BE 52" FROM INVERT TO ESTABLISHED GRADE. NO DEVIATION FROM THE 52" DEPTH WILL BE CONSIDERED FOR PAYMENT UNLESS DIRECTED BY THE ENGINEER IN WRITING.

	APPROVED:  HEAD, BUREAU OF WATER AND WASTEWATER	CITY OF BALTIMORE DEPARTMENT OF PUBLIC WORKS BUREAU OF WATER AND WASTEWATER	ISSUED	REVISED	REVISED
	 DIRECTOR, DEPARTMENT OF PUBLIC WORKS		3 / 2008		
TYPE 'S' COMBINATION INLET DOUBLE GRATE TANDEM			<b>STANDARD NO.</b> <b>BC 380.51</b>		
			SCALE: NONE		SHEET 1 OF 1