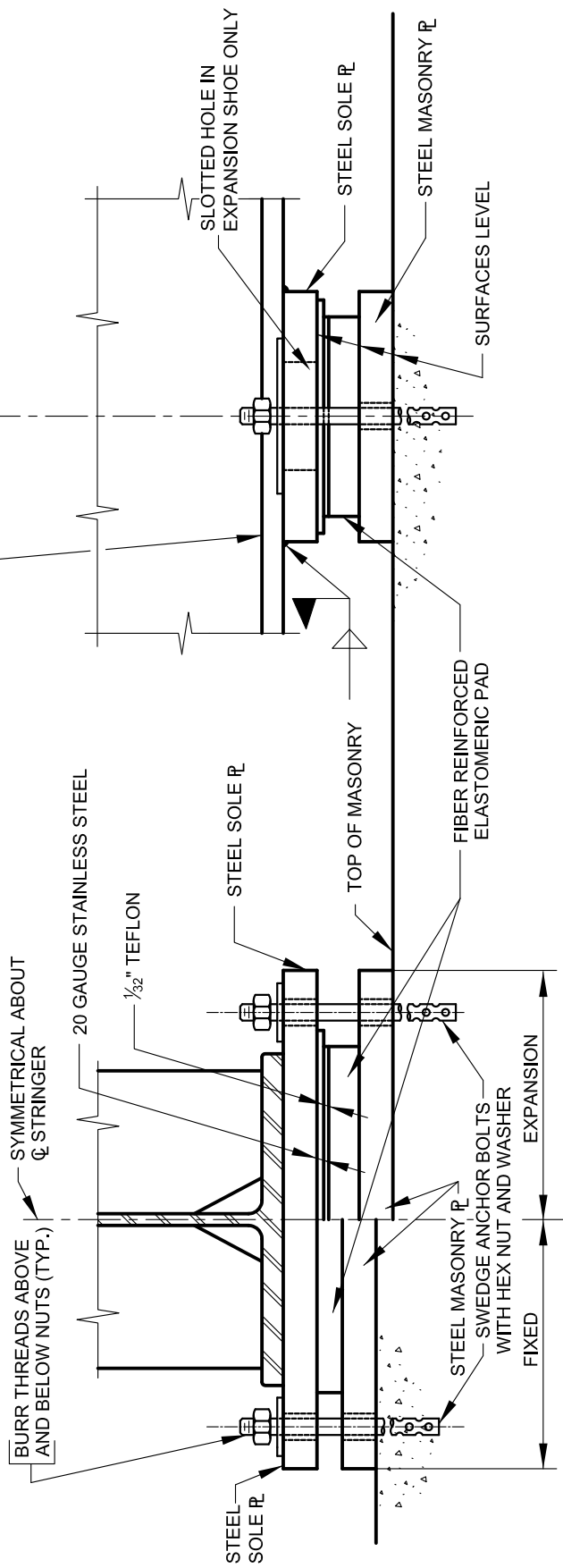


SLOTTED HOLE DETAIL

SLOPE TOP OF SOLE PLATE TO FIT ALL GRADES OF BOTTOM FLANGE IN EXCESS OF 0.5% (1/16" PER FT.)


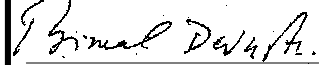
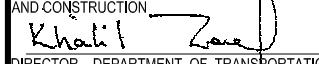
Ø BEARING



SIDE VIEW

END VIEW

ELASTOMERIC BEARING FOR STEEL BEAM SIMPLE AND CONTINUOUS SPANS LESS THAN 150' C/C BEARINGS

	APPROVED:  DIVISION CHIEF, TRANSPORTATION ENGINEERING AND CONSTRUCTION  DIRECTOR, DEPARTMENT OF TRANSPORTATION	CITY OF BALTIMORE DEPARTMENT OF TRANSPORTATION TRANSPORTATION ENGINEERING AND CONSTRUCTION		ISSUED	REVISED	REVISED
		BEARING SHOE DETAILS SPANS LESS THAN 150' C/C BEARINGS		8 / 2010		
		STANDARD NO. BC 452.01		SCALE: NONE SHEET 1 OF 1		