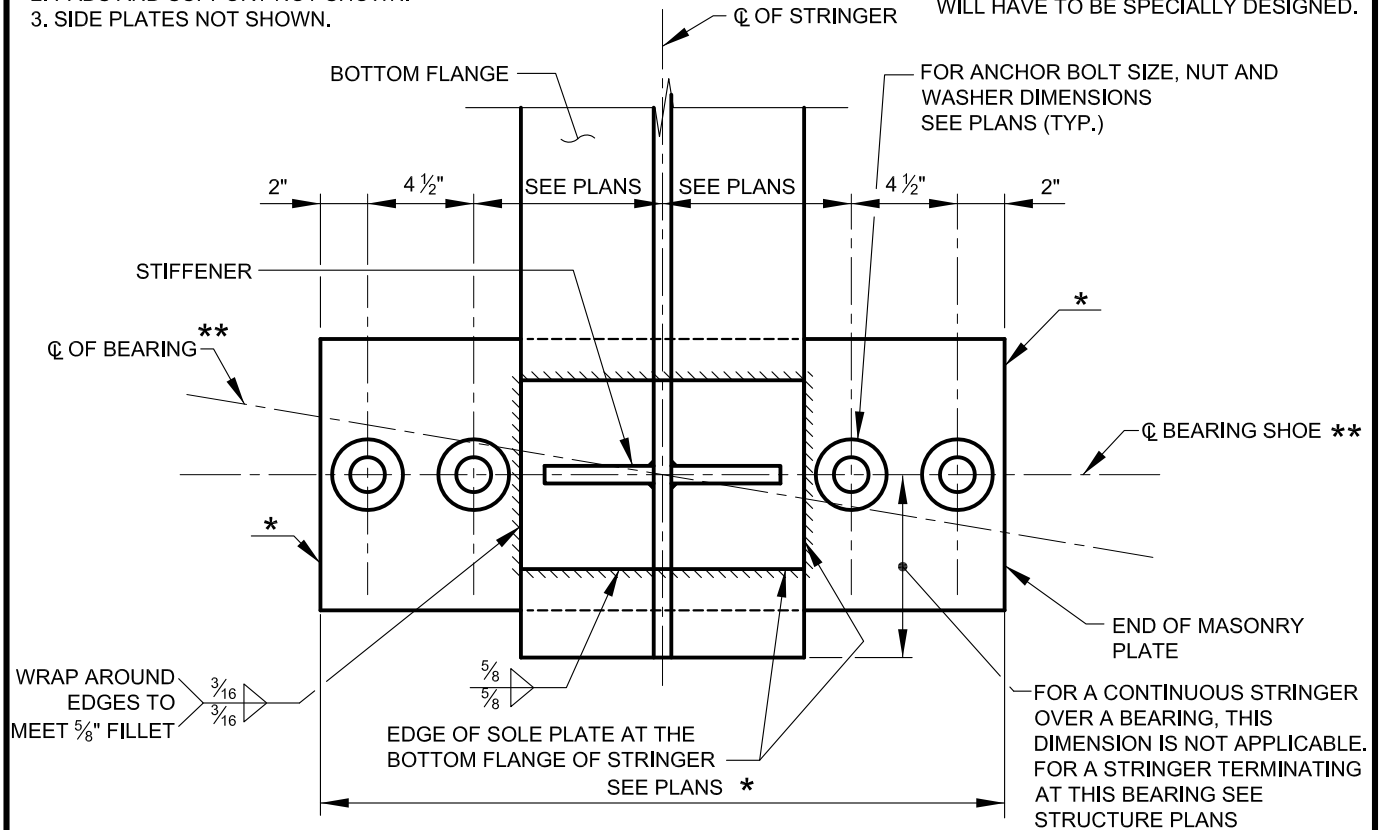


NOTE:

1. NUTS NOT SHOWN.
2. PADS AND SUPPORT NOT SHOWN.
3. SIDE PLATES NOT SHOWN.

NOTE:

FOR LONG SPAN BRIDGES, BEARINGS WILL HAVE TO BE SPECIALLY DESIGNED.



PLAN

FOR ALL GIRDERS WITH SPAN LENGTHS OVER 150'

SCALE: NONE

NOTE:

TO ACCOMMODATE AASHTO REQUIREMENTS, BEARINGS FOR GIRDERS GREATER THAN 150' SHALL BE EXTENDED TO ACCOMMODATE 2 ADDITIONAL BOLTS. SIZE AND DETAILS OF ALL 4 ANCHOR BOLTS TO BE THE SAME AS THAT REQUIRED FOR 2 BOLT BEARINGS.

NOTE:


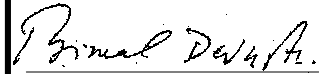
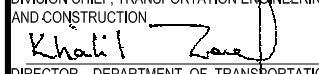
1. SOLE AND MASONRY PLATES TO BE ASTM A 709 GRADE 36 STEEL PAINTED TO MATCH FINISHED BRIDGE COLOR,
2. FILL SLOTS AND HOLES AROUND ANCHOR BOLTS WITH NONHARDENING CAULKING COMPOUND OR ELASTIC JOINT SEALER.
3. 1000 RMS (FINISH ALL OVER) EXCEPT WHERE OTHERWISE NOTED.
4. ROTATION $\frac{1}{2}^\circ \pm$ MAXIMUM.
5. DESIGN MASONRY BEARING LOAD 0.1 KSI.
6. TOP OF SOLE PLATE MUST BE BEVELED TO FIT GRADE OF BOTTOM FLANGE.
7. UNLESS OTHERWISE NOTED, BEARINGS SHALL BE PLACED NORMAL TO CL OF STRINGER.
8. PLATES ARE TO BE SHIPPED AS UNITS.
9. IF MORE THAN ONE SIZE BEARING IS CALLED FOR, CONTRACTOR MAY FURNISH ALL BEARINGS OF LARGER SIZE PROVIDED THE BEARING PADS ARE ALTERED TO ACCOMMODATE SAME. NO INCREASE IN ANY PRICES BID WILL BE ALLOWED IF THIS OPTION IS SELECTED.
10. ALL ANCHOR BOLTS AND WASHERS SHALL BE UNPAINTED ASTM A 709 GRADE 36 GALVANIZED STEEL. ALL NUTS SHALL BE UNPAINTED ASTM A 307 GALVANIZED STEEL.

* EDGE MAY BE LEFT AS CUT OR CAST.

** WHERE BRIDGE IS NOT SKEWED. CL BEARING AND CL SHOE ARE COINCIDENT.

NOTE TO DESIGNER:

GRADE 36 BEARING ARE TO BE USED IN BRIDGE REHABILITATION PROJECTS ONLY.

	APPROVED: 	CITY OF BALTIMORE DEPARTMENT OF TRANSPORTATION TRANSPORTATION ENGINEERING AND CONSTRUCTION	ISSUED	REVISED	REVISED	
	DIVISION CHIEF, TRANSPORTATION ENGINEERING AND CONSTRUCTION 	BEARING SHOE DETAILS SPANS GREATER THAN 150' C/C BEARINGS	8 / 2010			
	DIRECTOR, DEPARTMENT OF TRANSPORTATION	STANDARD NO. BC 454.01-1	SCALE: NONE	SHEET 1 OF 2		