

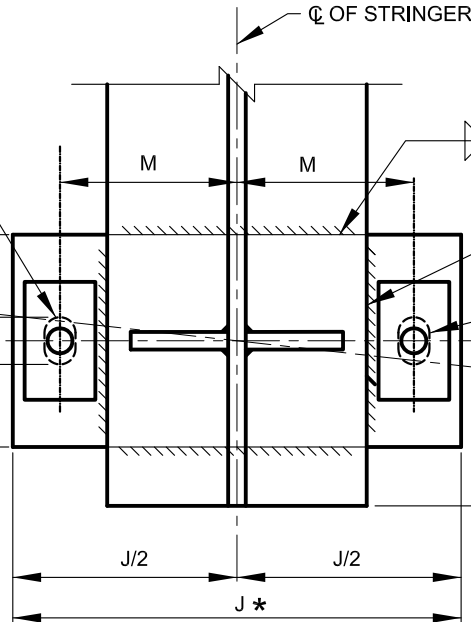
FOR 1 1/4" Ø ANCHOR BOLTS USE  
1 1/4" x 2N SLOT IN SOLE &  
BRONZE PLATES  
FOR 1 1/2" Ø ANCHOR BOLTS USE  
1 13/16" x 2N SLOT IN SOLE &  
BRONZE PLATES

☉ OF BEARING \*\*

K\*  
K/2  
N N @ 60° F  
K/2

NOTE:

1. NUTS NOT SHOWN.
2. PADS AND SUPPORT NOT SHOWN.
3. SIDE PLATES NOT SHOWN.
4. ADDITIONAL ANCHOR BOLTS  
REQUIRED FOR SPANS 150' OR  
GREATER, SEE SHEET 3 OF 3



FOR 1 1/4" Ø ANCHOR BOLTS USE  
1 9/16" Ø HOLE IN MASONRY &  
1 5/16" Ø HOLE IN WASHER.  
FOR 1 1/2" Ø ANCHOR BOLTS USE  
1 13/16" Ø HOLE IN MASONRY &  
1 1/16" Ø HOLE IN WASHER.

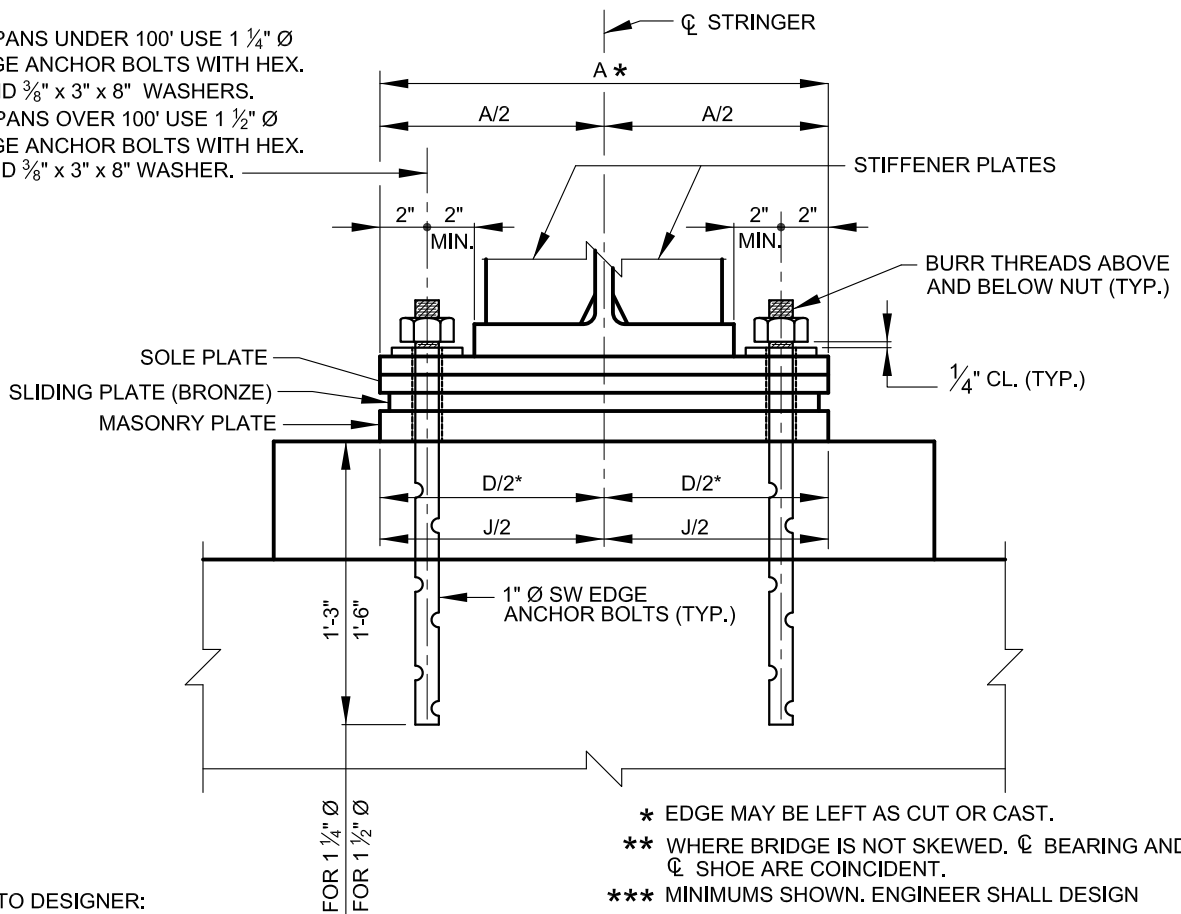
\*\*\*

☉ BEARING SHOE \*\*

FOR A CONTINUOUS STRINGER  
OVER A BEARING, THIS  
DIMENSION IS NOT APPLICABLE.  
FOR A STRINGER TERMINATING  
AT THIS BEARING SEE  
STRUCTURE PLANS

PLAN  
SCALE: NONE

FOR SPANS UNDER 100' USE 1 1/4" Ø  
SWEDGE ANCHOR BOLTS WITH HEX.  
NUT AND 3/8" x 3" x 8" WASHERS.  
FOR SPANS OVER 100' USE 1 1/2" Ø  
SWEDGE ANCHOR BOLTS WITH HEX.  
NUT AND 3/8" x 3" x 8" WASHER.



\* EDGE MAY BE LEFT AS CUT OR CAST.

\*\* WHERE BRIDGE IS NOT SKEWED. ☉ BEARING AND  
☉ SHOE ARE COINCIDENT.

\*\*\* MINIMUMS SHOWN. ENGINEER SHALL DESIGN

NOTE TO DESIGNER:

GRADE 50 BEARINGS ARE TO BE  
USED IN NEW BRIDGE PROJECTS.

ELEVATION  
SCALE: NONE



APPROVED:

*Primal DeWitt*  
DIVISION CHIEF, TRANSPORTATION ENGINEERING  
AND CONSTRUCTION  
*Khalil Zare*  
DIRECTOR, DEPARTMENT OF TRANSPORTATION

CITY OF BALTIMORE  
DEPARTMENT OF TRANSPORTATION  
ENGINEERING AND  
CONSTRUCTION

BRONZE EXPANSION BEARING  
MEDIUM LENGTH SPANS  
(GRADE 50 STEEL)

ISSUED	REVISED	REVISED
8 / 2010		
STANDARD NO. BC 463.01-1		
SCALE: NONE	SHEET 1 OF 3	