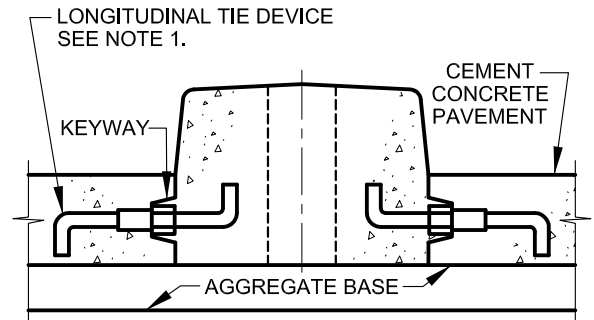
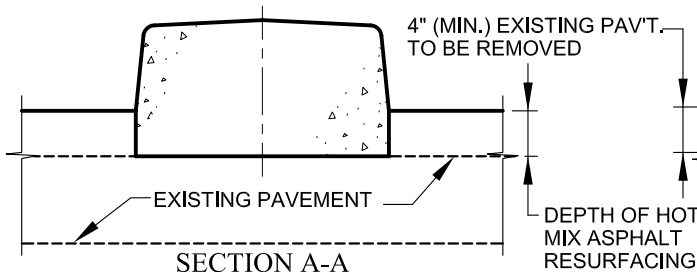


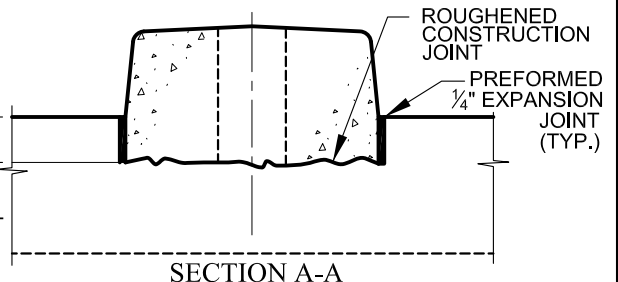
**SECTION A-A
TYPE A-1**
PLACED WITH HOT MIX
ASPHALT PAVEMENT



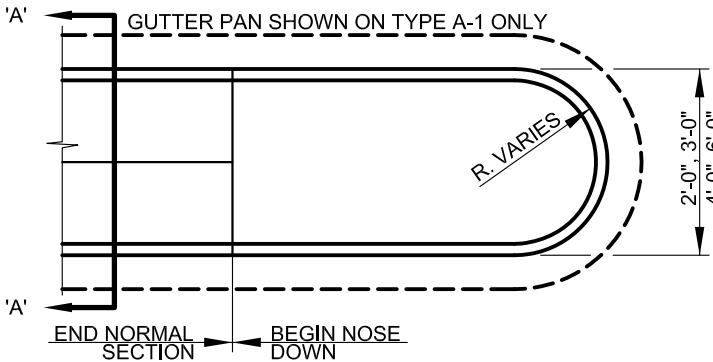
**SECTION A-A
TYPE A-2**
PLACED WITH CEMENT
CONCRETE PAVEMENT



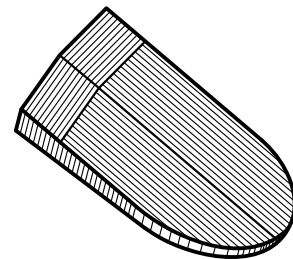
**SECTION A-A
TYPE A-3**
PLACED IN COMBINATION
WITH PAVEMENT RESURFACING



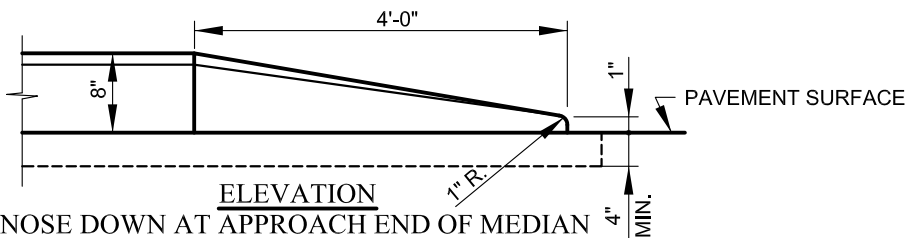
**SECTION A-A
TYPE A-4**
PLACED ON EXISTING CONCRETE PAVEMENT



PLAN



**ISOMETRIC NOSE DOWN
(SHOWN WITHOUT GUTTER PAN)**



ELEVATION

NOSE DOWN AT APPROACH END OF MEDIAN

NOTES

- UNLESS OTHERWISE SPECIFIED LONGITUDINAL TIE BAR DEVICE, TYPE 'A' OR TYPE 'B', PLACED AT MIDDLE OF KEYWAY & SPACED ACCORDING TO SPECIFICATIONS FOR CONCRETE PAVEMENT SHALL BE USED AT CONSTRUCTION JOINT BETWEEN MONOLITHIC CONCRETE MEDIAN (OR GUTTER PAN) AND CONCRETE PAVEMENT, SEE STANDARD BC 572.61-1.
- JOINT SPACING WILL BE A MAXIMUM OF 10'-0" APART. SEE SPECIFICATIONS FOR LOCATION AND DESCRIPTION OF TREATMENT FOR THE TYPES OF JOINTS USED. CONCRETE PAVEMENT, JOINTS SHALL MATCH PAVEMENT JOINTS.
- ALLOW 4" Ø HOLES IN MEDIAN FOR SIGNS. SPACED AS SHOWN ON PLANS OR AS DIRECTED BY THE ENGINEER.



APPROVED:
Primal Dev...
DIVISION CHIEF, TRANSPORTATION ENGINEERING
AND CONSTRUCTION
Khalil Z...
DIRECTOR, DEPARTMENT OF TRANSPORTATION

**CITY OF BALTIMORE
DEPARTMENT OF TRANSPORTATION
TRANSPORTATION ENGINEERING AND
CONSTRUCTION**

**STANDARD MONOLITHIC
CONCRETE MEDIAN
TYPE 'A'**

ISSUED	REVISED	REVISED
8 / 2010		
STANDARD NO. BC 645.04		
SCALE: NONE	SHEET 1 OF 1	