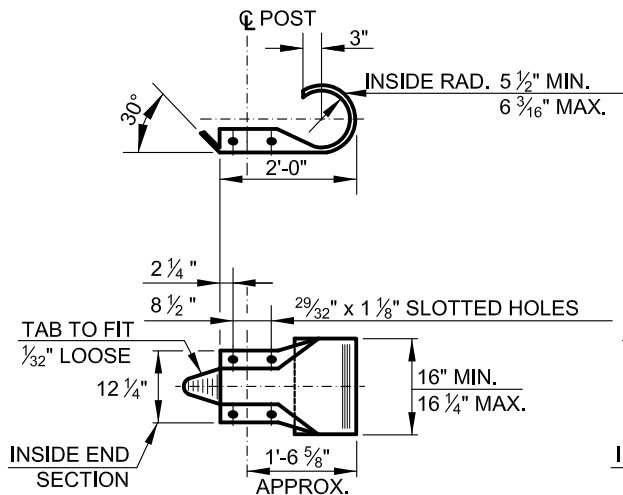
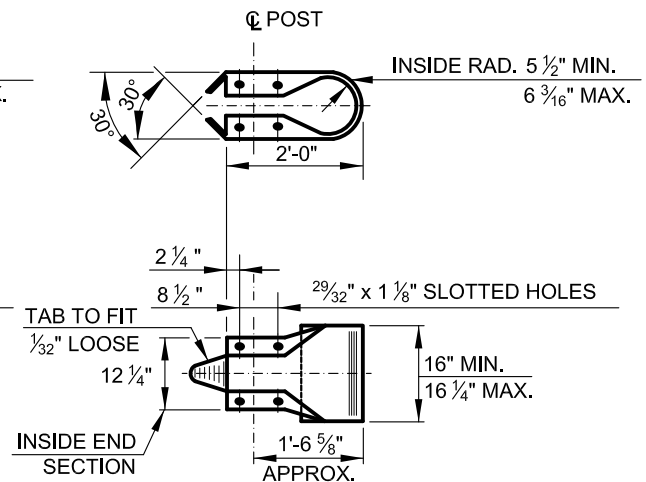


**SECTION THRU RAIL ELEMENT**  
(MATERIAL: 12 GA. STEEL)



**TRAFFIC BARRIER - END SECTION**

(MATERIAL: 10 GA. STEEL)



**TRAFFIC BARRIER - END SECTION**

(FOR BARRIER ON BOTH SIDES OF SAME POST)  
(MATERIAL: 10 GA. STEEL)

**GENERAL NOTES:**

1. ALL DIMENSIONS ARE SUBJECT TO MFG. TOLERANCES.
2. RAIL ELEMENTS ARE FINISHED SHOP CURVED, CONCAVE OR CONVEX TO RADII BETWEEN 20 FT. & 150 FT.
3. THE STEEL FOR RAIL ELEMENTS AND BOLTS IS OF A QUALITY TO DEVELOP SPECIFICATION VALUES FOR BEAM AND TENSILE STRENGTHS.
4. FOR MATERIALS, MATERIAL PROCESSING AND ASSEMBLY, SEE LATEST DEPARTMENT OF GENERAL SERVICES SPECIFICATIONS.
5. FOR OFFSET BRACKET DETAIL, SEE BC 660.03
6. POSTS TO BE W6x8.5, 5'-9" LONG, SPACED AT 6'-3" C/C. EXCEPT AT STRUCTURES OR REINFORCED SECTIONS.
7. BACK-UP PLATE (12" LENGTH OF BEAM) CENTERED ON OFFSET BRACKET. BOLT TO BE PLACED WHERE NO OVERLAP OF RAIL SPLICE OCCURS.
8. AT BRIDGE APPROACH USE 6 POSTS SPACED AT 2'-0" C/C & NEXT 4 POSTS AT 3'-1 1/2" C/C.
9. AT FIXED OBJECT USE REINFORCED RAIL SECTION.



APPROVED:

*Frank Murphy*

DEPUTY DIRECTOR - OPERATIONS

*Khali Zane*

DIRECTOR, DEPARTMENT OF TRANSPORTATION

CITY OF BALTIMORE  
DEPARTMENT OF TRANSPORTATION  
TRAFFIC DIVISION

TRAFFIC BARRIER W BEAM  
GENERAL NOTES & DETAILS

ISSUED	REVISED	REVISED
8 / 2010		

STANDARD NO.  
BC 660.01

SCALE : NONE

SHEET 1 OF 1