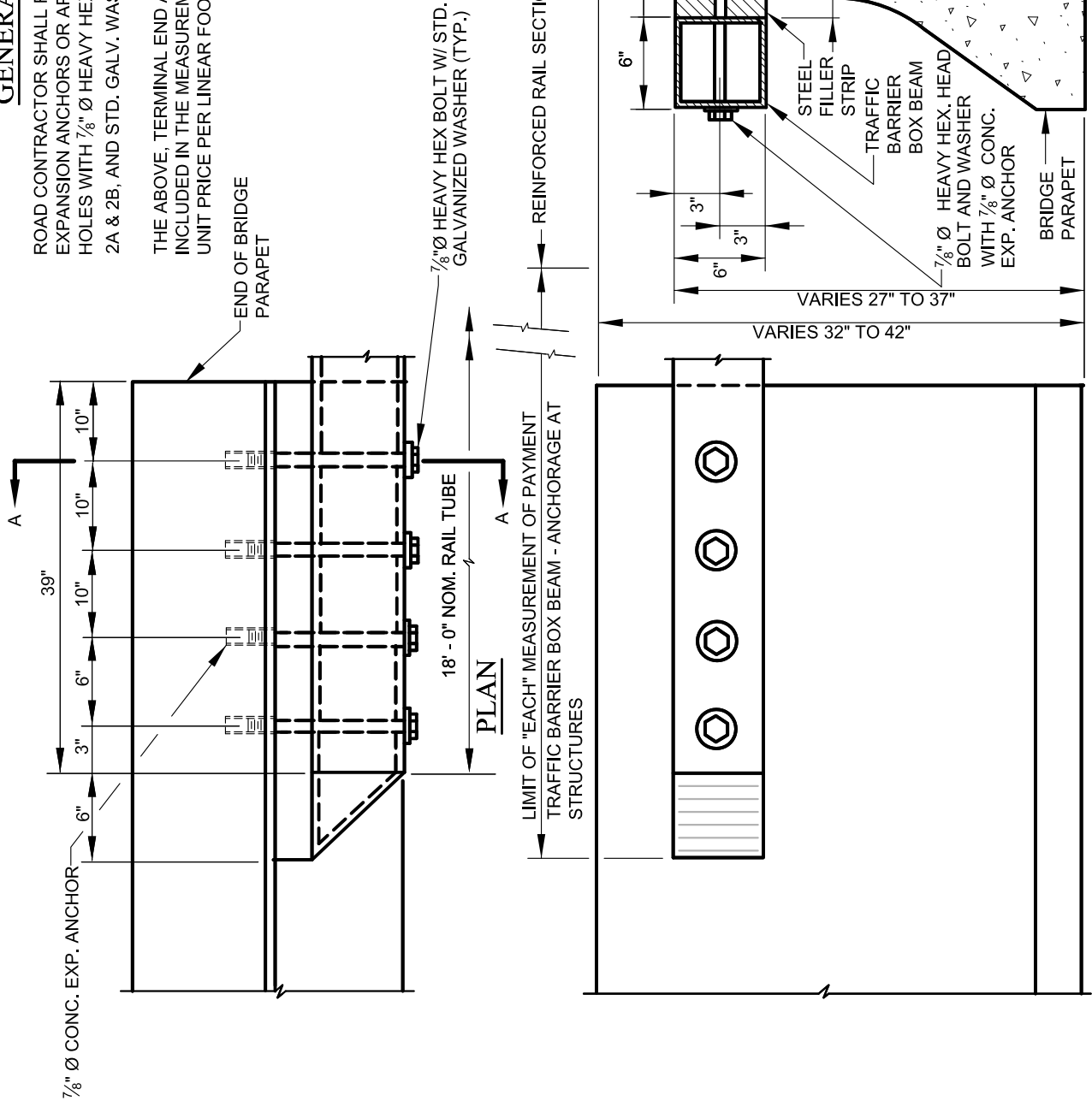


GENERAL NOTES

ROAD CONTRACTOR SHALL FURNISH AND INSTALL 4-7/8" Ø CONCRETE EXPANSION ANCHORS OR APPROVED EQUIVALENT, 1 1/8" Ø DRILLED HOLES WITH 7/8" Ø HEAVY HEX BOLTS, 8 1/2" LONG, GALV. UNC CLASS 2A & 2B, AND STD. GALV. WASHERS.

THE ABOVE, TERMINAL END AND STEEL FILLER STRIP TO BE INCLUDED IN THE MEASUREMENT AND PAYMENT OF THE CONTRACT UNIT PRICE PER LINEAR FOOT FOR "TRAFFIC BARRIER BOX BEAM".



ELEVATION

SECTION A-A



APPROVED:
Frank Murphy
 DEPUTY DIRECTOR - OPERATIONS
Khalil Zane
 DIRECTOR, DEPARTMENT OF TRANSPORTATION

CITY OF BALTIMORE
 DEPARTMENT OF TRANSPORTATION
 TRAFFIC DIVISION
TRAFFIC BARRIER BOX BEAM ANCHORAGE AT STRUCTURE

ISSUED	REVISED	REVISED
8 / 2010		
STANDARD NO. BC 662.31		
SCALE: NONE	SHEET 1 OF 1	