

GRANITE BLOCK
OR OTHER TYPE
PAVER ON
SAND BASE

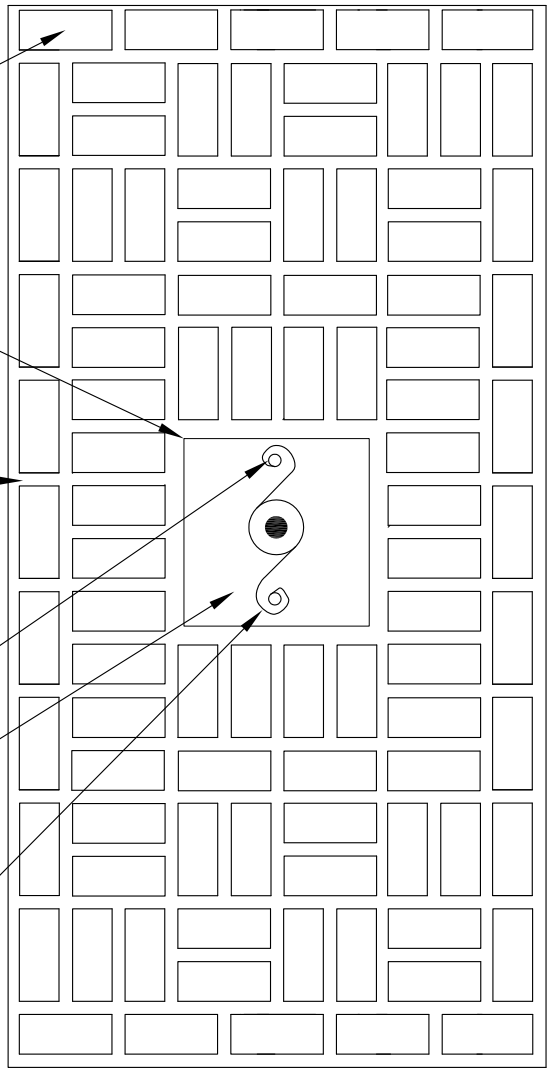
2x4 BOARD, STAKED IN
PLACE, AROUND 2'x2' MIN.
OPENING AROUND TREE
(TYP.)

SAND JOINTS
 $\frac{3}{4}$ " TO 1"
MAX. (TYP.)

(2) 8'-0"
LONG. 3" DIA
STAKES

OPENING 2' x 2' MIN.

"ARBOR TIE"



OR AS PER
CONTRACT PLANS



APPROVED:

Primal Devita
DIVISION CHIEF, TRANSPORTATION ENGINEERING
AND CONSTRUCTION
Khalil Zare
DIRECTOR, DEPARTMENT OF TRANSPORTATION

CITY OF BALTIMORE
DEPARTMENT OF TRANSPORTATION
TRANSPORTATION ENGINEERING AND
CONSTRUCTION

**TREE PIT PAVING DETAIL:
GRANITE OR CONCRETE BLOCK FOR
USE IN HIGH TRAFFIC AREAS ONLY**

ISSUED	REVISED	REVISED
8 / 2010		
STANDARD NO. BC 704.01		
SCALE: NONE	SHEET 1 OF 1	