

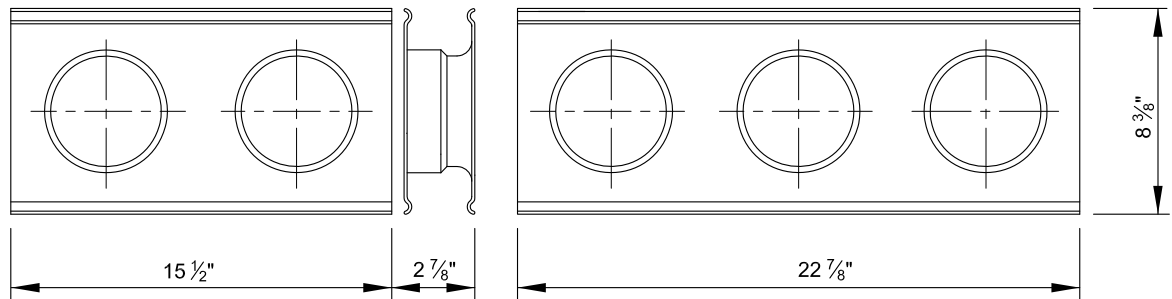
## DUCT PLUG

P.V.C.	6"	TAPERED
P.V.C.	5"	TAPERED
P.V.C.	4"	TAPERED
P.V.C.	3"	TAPERED



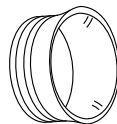
## DUCT TERMINATORS




ABS	6"	2-WAY
ABS	6"	3-WAY
ABS	5"	2-WAY
ABS	5"	3-WAY
ABS	4"	2-WAY
ABS	4"	3-WAY



## DUCT BELL ENDS

P.V.C.	6"	MOLDED
P.V.C.	5"	MOLDED
P.V.C.	4"	MOLDED
P.V.C.	3"	MOLDED



	APPROVED:  CHIEF, CONDUIT DIVISION	CITY OF BALTIMORE DEPARTMENT OF TRANSPORTATION CONDUIT DIVISION	ISSUED	REVISED	REVISED	
	 DIRECTOR, DEPARTMENT OF TRANSPORTATION	<b>DUCT PLUGS, BELL ENDS AND TERMINATORS</b>	8 / 2010			STANDARD NO. BC 802.03-3
			SCALE : NONE	SHEET 3 OF 4		