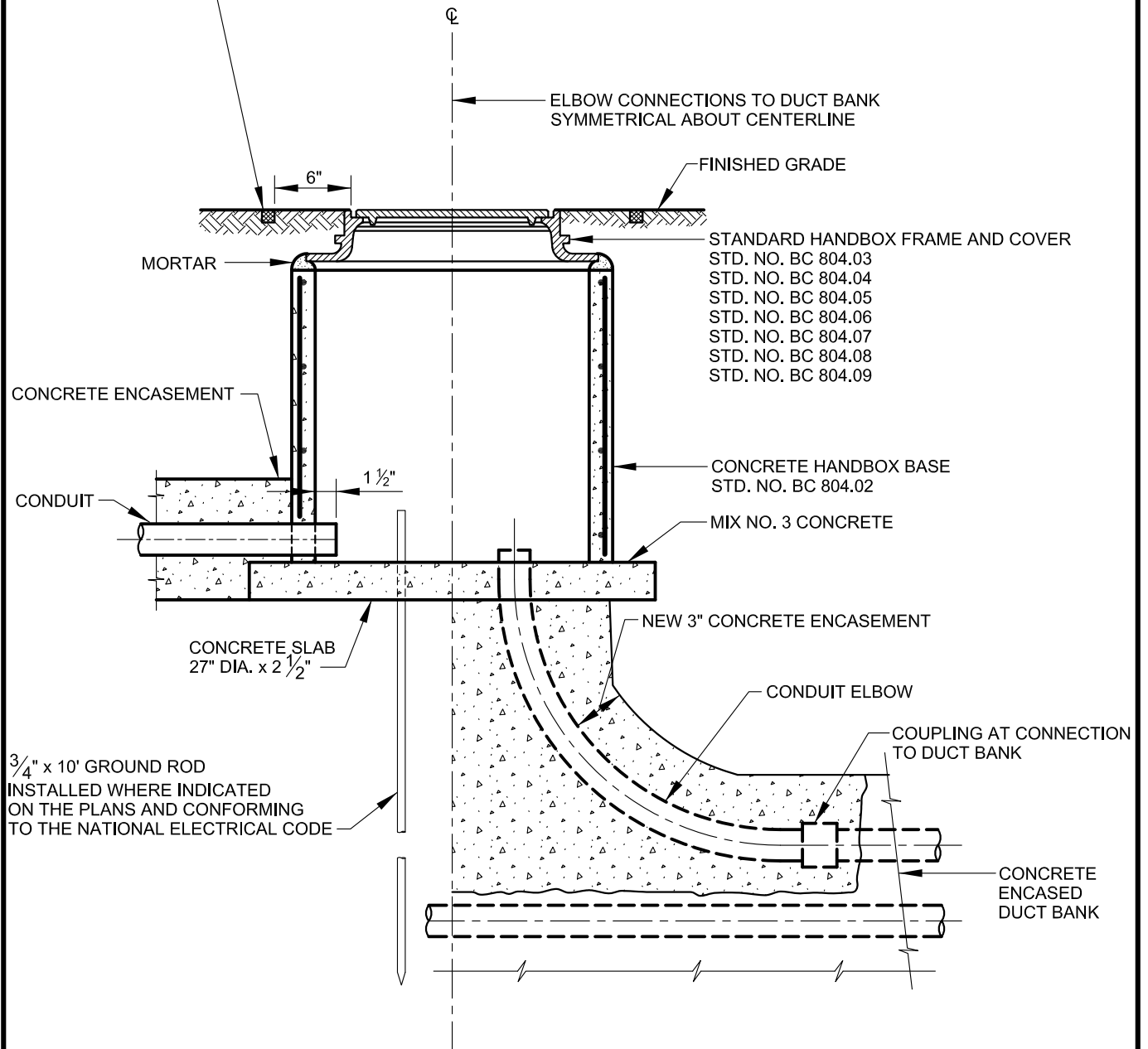
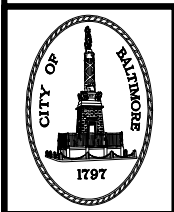


WHEN HANDBOX IS INSTALLED IN CONCRETE,  
 $\frac{1}{2}$ " EXPANSION MATERIAL IS TO BE PLACED  
 AROUND THE BASE, SQUARED OFF, AS  
 DIMENSIONED, SEE BC 655.01



CONNECTION TO  
 LIGHT STANDARDS

CONNECTION TO  
 EXISTING DUCT BANK



APPROVED:  
*Richard J. Baker*  
 CHIEF, CONDUIT DIVISION  
*Khail Zare*  
 DIRECTOR, DEPARTMENT OF TRANSPORTATION

CITY OF BALTIMORE  
 DEPARTMENT OF TRANSPORTATION  
 CONDUIT DIVISION

**HANDBOX-CONDUIT  
 TYPICAL INSTALLATION**

ISSUED	REVISED	REVISED
8 / 2010		
STANDARD NO. BC 804.01		
SCALE: NONE	SHEET 1 OF 1	