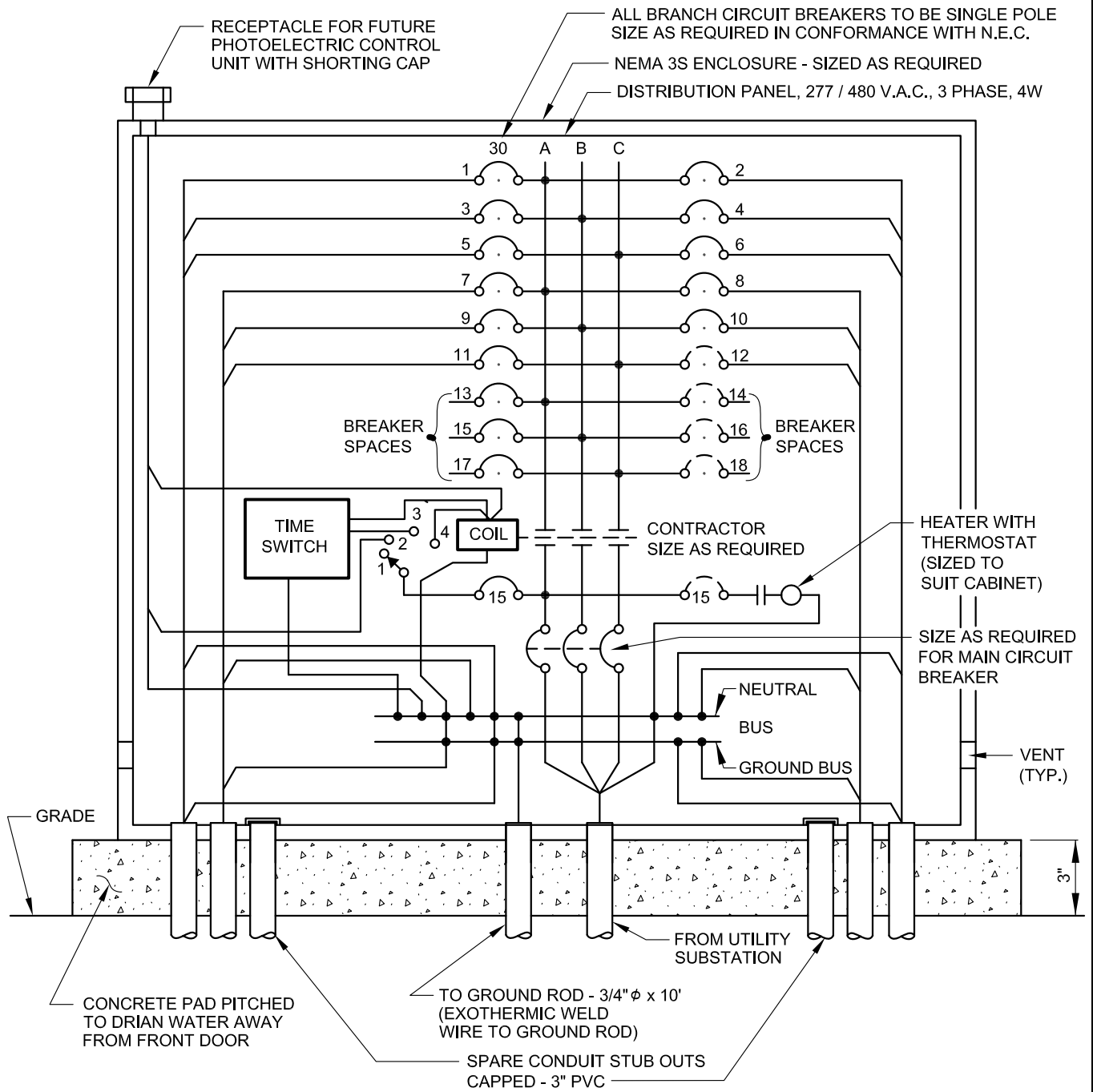


SELECTOR SWITCH POSITION

- 1 - OFF
- 2 - PHOTOCELL CONTROL
- 3 - TIME SWITCH CONTROL WITH 24 HR MIN. RESERVE POWER SPRING MECHANISM
- 4 - MANUAL CONTROL

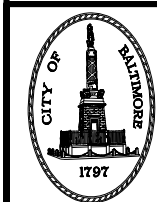


NOTES:

- A - SIZE BRANCH CIRCUIT CONDUCTORS FOR 5 PERCENT MAXIMUM VOLTAGE DROP.
- B - MINIMUM WIRE SIZE - #12 THWN FOR CONTROLS
- C - BASE SPARES ON 20% OF ACTIVE CIRCUITS BUT NOT LESS THAN THREE SPARES

CIRCUIT	LOAD	* VOLT DROP
1.		
2.		
3.		
4.		
ETC.		

* MAXIMUM VOLT DROP ON 277 VOLT CIRCUIT IS 13.85 VOLTS (5%)



APPROVED:

Primal Dev...

DIVISION CHIEF, TRANSPORTATION ENGINEERING AND CONSTRUCTION

Khalil Z...

DIRECTOR, DEPARTMENT OF TRANSPORTATION

CITY OF BALTIMORE
DEPARTMENT OF TRANSPORTATION
TRANSPORTATION ENGINEERING AND CONSTRUCTION

ROADWAY LIGHTING DISTRIBUTION
PANEL SCHEMATIC DIAGRAM -
480Y/277 - UNMETERED

ISSUED	REVISED	REVISED
8 / 2010		

STANDARD NO.
BC 804.11

SCALE: NONE SHEET 1 OF 1