

REBAR DETAIL

MK-P (TYP.)
EPOXY
COATED

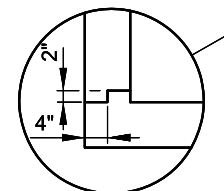
6" x 22" PLASTIC SUMP

MK - R @ 6" O.C.

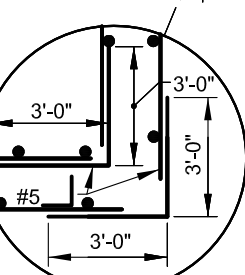
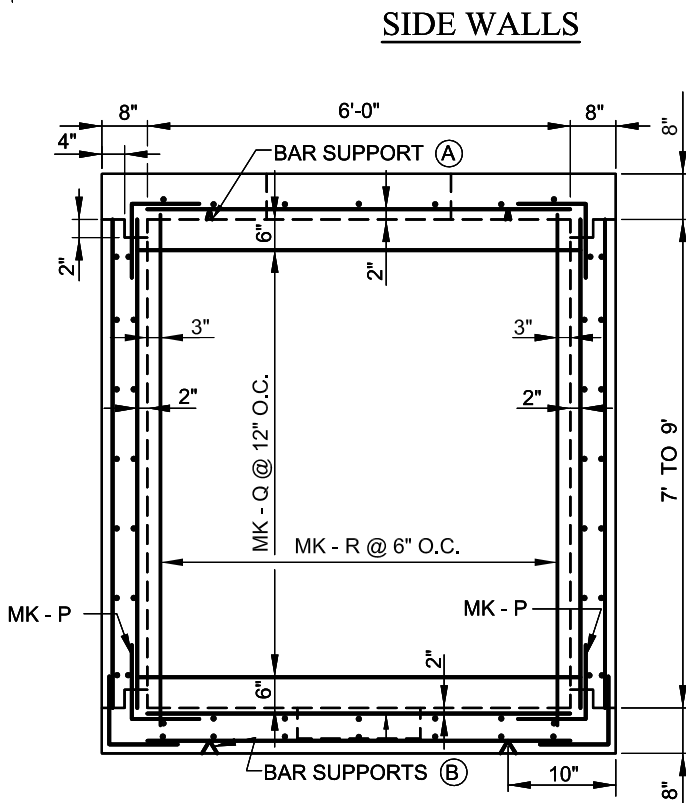
MK - P

MK - S @ 12" O.C.

SIDE WALLS






CONSTRUCTION JOINT (TYP.)



REBAR DETAIL

END WALLS

NOTE: SEE STEEL DETAIL SHEET FOR PULLING IRON REQUIREMENTS.

	APPROVED:  CHIEF, CONDUIT DIVISION  DIRECTOR, DEPARTMENT OF TRANSPORTATION	CITY OF BALTIMORE DEPARTMENT OF TRANSPORTATION CONDUIT DIVISION	ISSUED 8 / 2010	REVISED	REVISED	
	DETAILS FOR 6 FT x 12 FT POURED IN PLACE LINE MANHOLE			STANDARD NO. BC 825.02-2		
				SCALE : NONE	SHEET 2 OF 2	