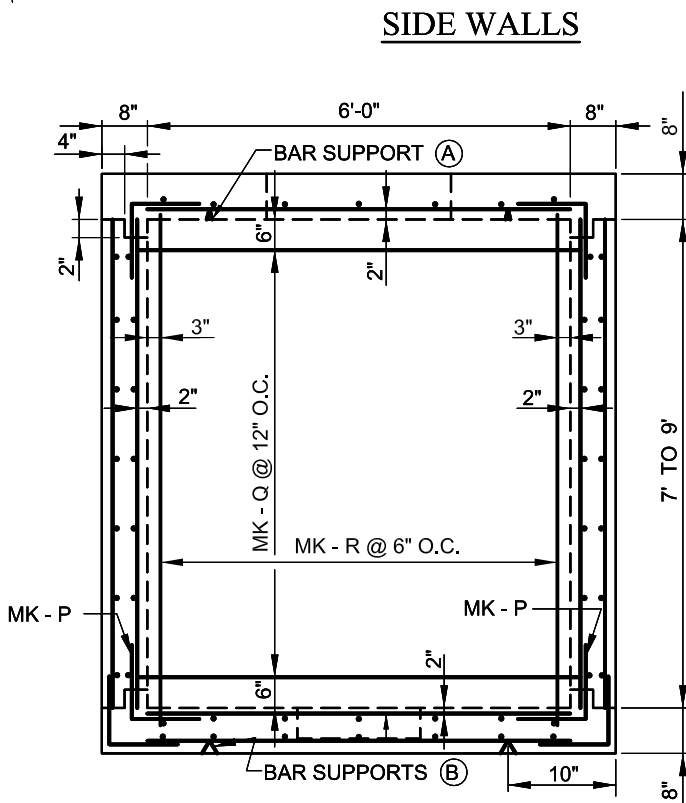


REBAR DETAIL

MK-P (TYP.)
EPOXY
COATED

SIDE WALLS


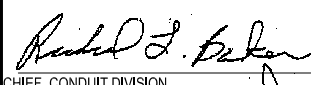
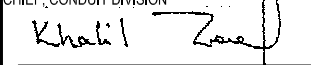
CONSTRUCTION
JOINT (TYP.)



REBAR DETAIL

END WALLS

SEE B.C. 825.05 FOR PULLING IRON REQUIREMENTS

	APPROVED:  CHIEF, CONDUIT DIVISION  DIRECTOR, DEPARTMENT OF TRANSPORTATION	CITY OF BALTIMORE DEPARTMENT OF TRANSPORTATION CONDUIT DIVISION	ISSUED 8 / 2010	REVISED	REVISED	
	DETAILS FOR 6 FT x 12 FT POURED IN PLACE TRANSFORMER MANHOLE			STANDARD NO. BC 825.06-2		
				SCALE : NONE	SHEET 2 OF 2	