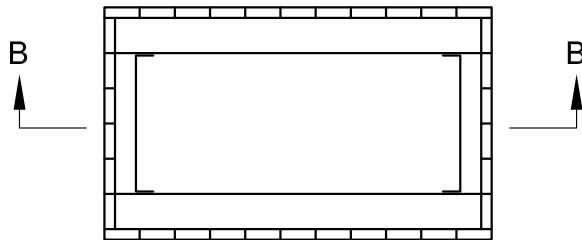


SECTION B-B


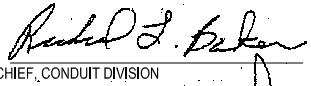

NOTES:

- A. 8" OF STABILIZER MATERIAL (PEA - GRAVEL)
- B. BOTTOM TO BE DRY AND LEVELED TO WITHIN 1" SIDE TO SIDE.
- C. 2" SHORING #1 ROUGH PINE, TO BE CARRIED ON ALL FOUR SIDES.
- D. PRIOR TO BACKFILLING, REMOVE ALL SHORING WHEN CONDITIONS ALLOW AND PERMIT AUTHORITIES APPROVE.
- E. BACKFILL WITH CLEAN DRY WELL COMPACTED MATERIAL. USE BANK RUN SAND AND GRAVEL.



PLAN

SEE SHEET 1 OF 2 FOR DIMENSIONS

	APPROVED:  CHIEF, CONDUIT DIVISION  DIRECTOR, DEPARTMENT OF TRANSPORTATION	CITY OF BALTIMORE DEPARTMENT OF TRANSPORTATION CONDUIT DIVISION	ISSUED 8 / 2010	REVISED	REVISED
	EXCAVATION & SHORING FOR PRECAST MANHOLES		STANDARD NO. BC 825.08-2		
			SCALE : NONE	SHEET 2 OF 2	