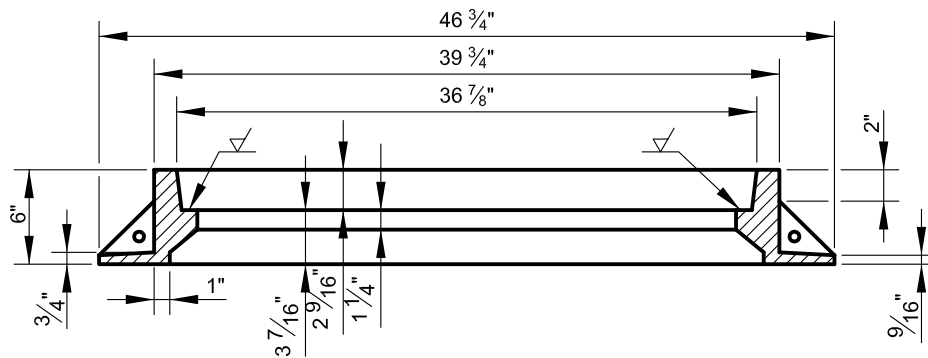


PLAN OF CASTING A-2



SECTION A-A

AVERAGE WEIGHT OF CASTING A-2 - 350 LBS.



APPROVED:

*Richard J. Baker*

CHIEF, CONDUIT DIVISION

*Khalil Zane*

DIRECTOR, DEPARTMENT OF TRANSPORTATION

CITY OF BALTIMORE  
DEPARTMENT OF TRANSPORTATION  
CONDUIT DIVISION

MANHOLE - CONDUIT  
STANDARD FRAME

ISSUED	REVISED	REVISED
8 / 2010		

STANDARD NO.  
BC 825.13

SCALE : NONE

SHEET 1 OF 1