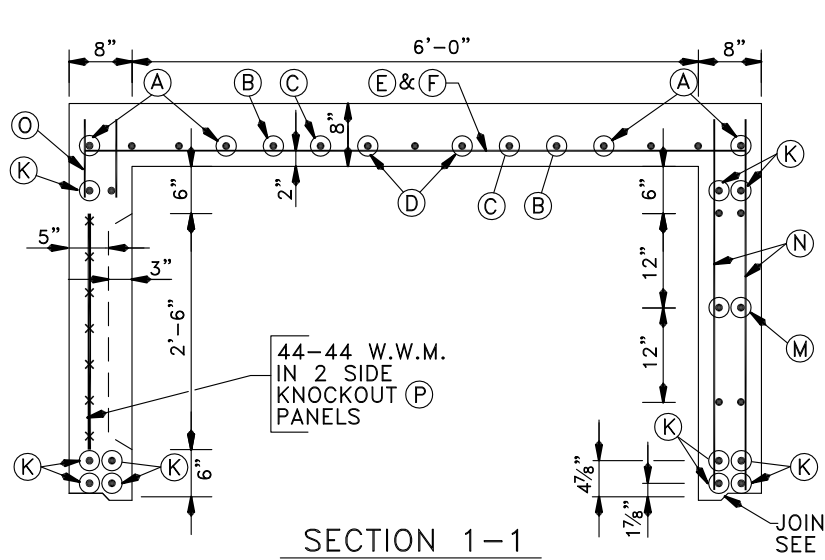
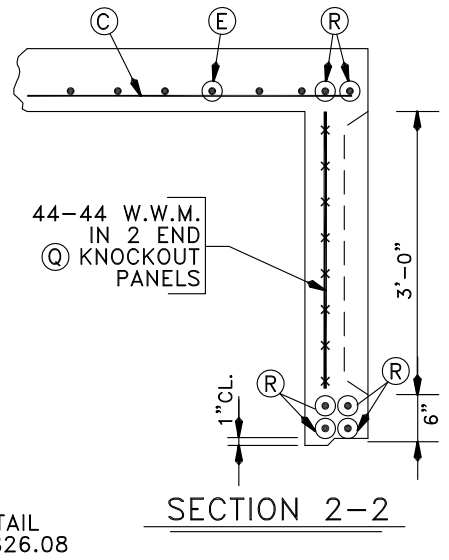


PLAN - TOP HALF



SECTION 1-1



SECTION 2-2

GENERAL NOTES

BOTTOM HALF (6'x8'x7' MANHOLE) SEE BC 827.01-2  
 BAR SCHEDULE (6'x8'x7' MANHOLE) SEE BC 827.03  
 KNOCKOUT DETAILS SEE BC 826.05  
 INSERTS FOR RECESSED EXTENSION SEE BC 826.06  
 ACCESSORIES FOR PRECAST MANHOLES SEE BC 826.08  
 STANDARD ACCESS STACK SEE BC 825.11  
 PRECAST RECESSED EXTENSION SEE BC 826.07-1

SPECIFICATIONS.....LATEST DEPARTMENT OF GENERAL SERVICES  
 CONCRETE.....f<sub>c</sub>=5,000 PSI-MIX AS APPROVED BY ENGINEER  
 REINFORCING.....ASTM A615, GRADE 60  
 WELDED WIRE MESH....ASTM A185  
 LOADING.....HS 25 TRUCK LOADING



APPROVED:  
*Richard J. Baker*  
 CHIEF, CONDUIT DIVISION  
*Khail Zare*  
 DIRECTOR, DEPARTMENT OF TRANSPORTATION

CITY OF BALTIMORE  
 DEPARTMENT OF TRANSPORTATION  
 CONDUIT DIVISION  
**PRECAST MANHOLE  
 6' x 8' x 7' HEADROOM  
 TOP HALF**

ISSUED	REVISED	REVISED
8 / 2010		
STANDARD NO. BC 827.01-1		
SCALE: NONE	SHEET 1 OF 2	