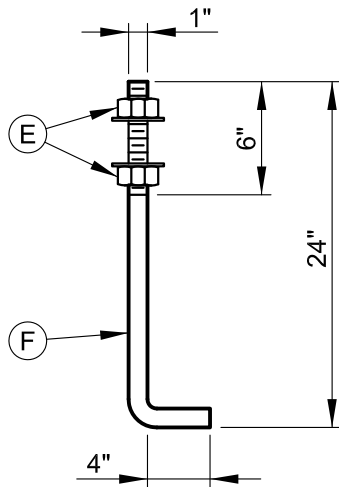
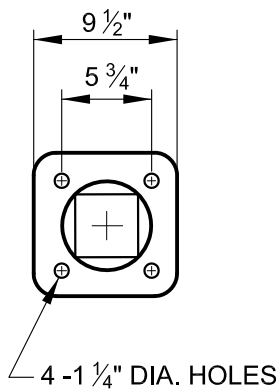
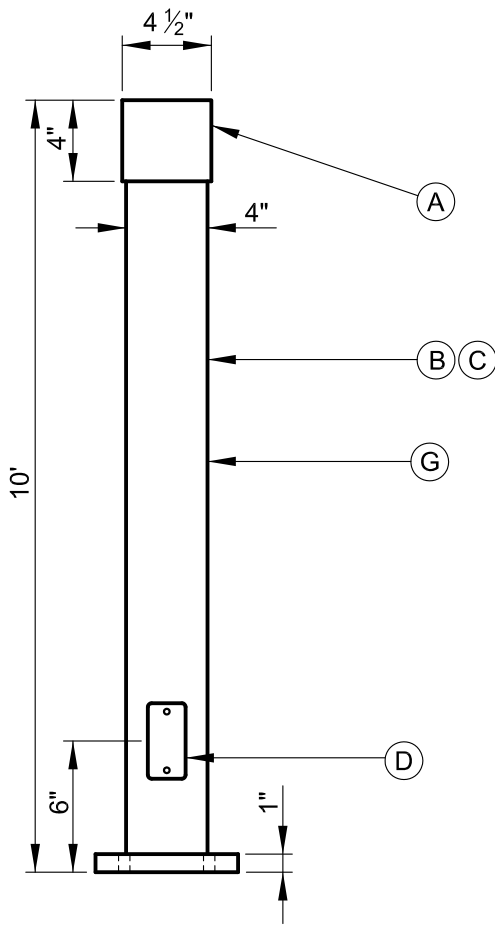


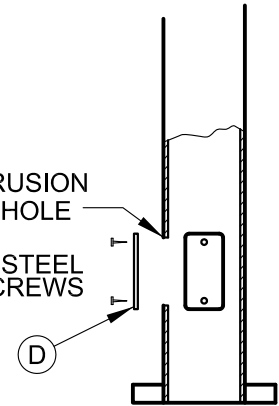
REQUIREMENTS

- (A) ROUND 4" DIAMETER STANDARD PIPE SIZE
(4 1/2" O.D. x .237" WALL THICKNESS)
- (B) SQUARE STRAIGHT STEEL SHAFT
- (C) SHAFT TO BE MINIMUM 11 GAUGE STEEL
- (D) MINIMUM SIZE 3" x 5" REINFORCED HANDHOLE AND COVER PLATE WITH ROUNDED CORNERS. MAXIMUM 3/8" PROTRUSION AROUND HANDHOLE.
- (E) (8) - 1" GALVANIZED, HEX NUTS AND FLAT WASHERS REQUIRED PER POLE
- (F) (4) - 1" GALVANIZED ANCHOR BOLTS REQUIRED PER POLE
- (G) FINISH TO BE GALVANIZED OR BRONZE AS SPECIFIED



MAX. 3/8" PROTRUSION AROUND HANDHOLE

STAINLESS STEEL TYPE 304 SCREWS



HANDHOLE DETAIL

NOTE: A 3/8" POLE GROUNDING LUG SHALL BE PROVIDED AT THE HANDHOLE.



APPROVED:

Primal Devita
DIVISION CHIEF, TRANSPORTATION ENGINEERING AND CONSTRUCTION

Khalil Zare
DIRECTOR, DEPARTMENT OF TRANSPORTATION

CITY OF BALTIMORE
DEPARTMENT OF TRANSPORTATION
TRANSPORTATION ENGINEERING AND CONSTRUCTION

**INNER HARBOR TYPE
SQUARE PEDESTAL POLE**

ISSUED	REVISED	REVISED
8 / 2010		
STANDARD NO. BC 880.10		
SCALE : NONE	SHEET 1 OF 1	